



Tamworth Regional Local Environmental Plan 2010

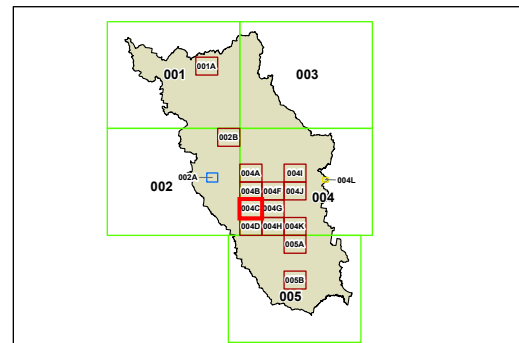
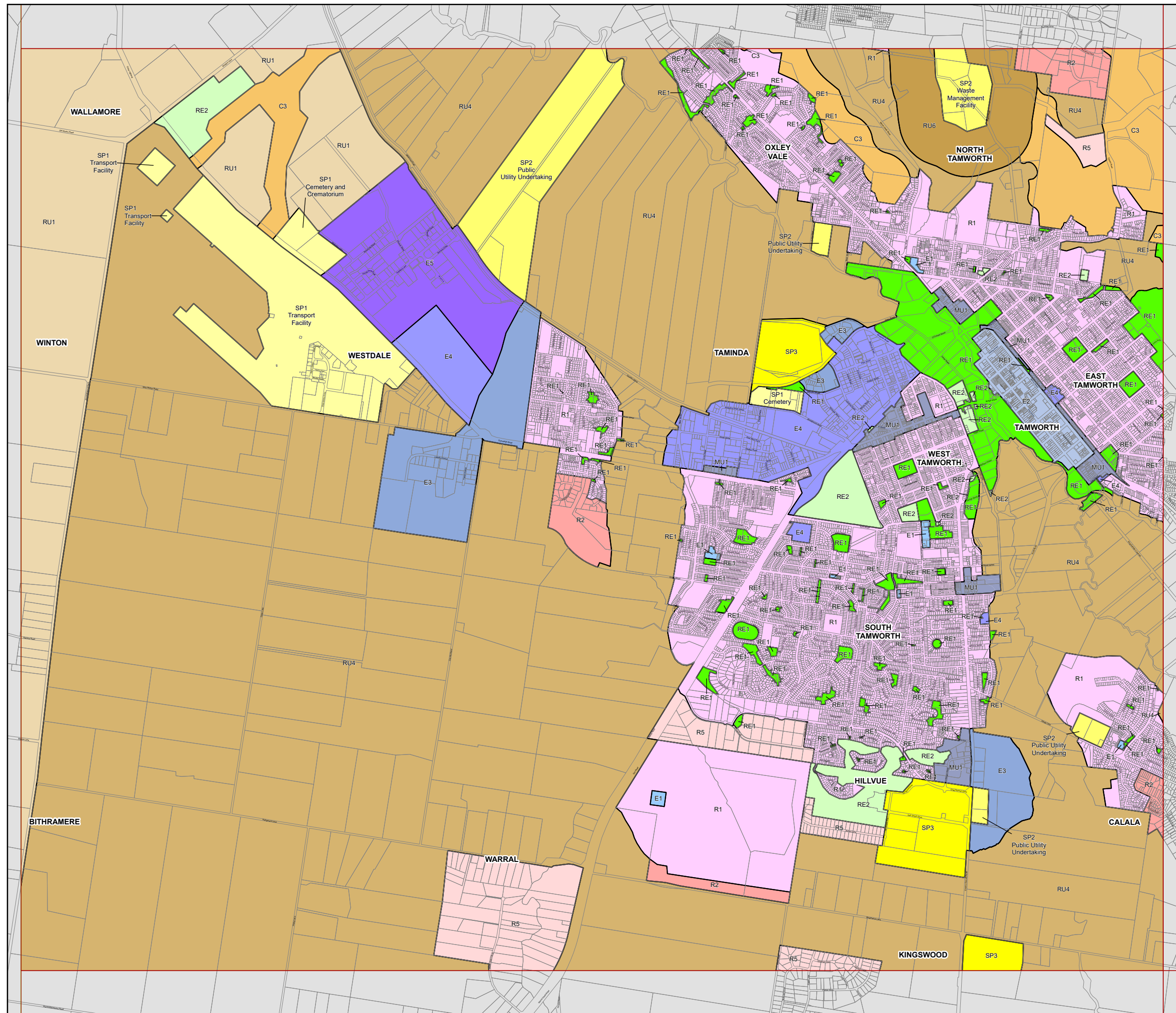
Land Zoning Map - Sheet LZN_004C

Zone

- C1** National Parks and Nature Reserves
- C2** Environmental Conservation
- C3** Environmental Management
- E1** Local Centre
- E2** Commercial Centre
- E3** Productivity Support
- E4** General Industrial
- E5** Heavy Industrial
- MU1** Mixed Use
- R1** General Residential
- R2** Low Density Residential
- R5** Large Lot Residential
- RE1** Public Recreation
- RE2** Private Recreation
- RU1** Primary Production
- RU3** Forestry
- RU4** Primary Production Small Lots
- RU5** Village
- RU6** Transition
- SP1** Special Activities
- SP2** Infrastructure
- SP3** Tourist

Cadastre

Base Data: 24/01/2023 © NSW Spatial Services



0 0.5 1 Km

Projection: GDA 2020
MGA Zone 56

Scale 1:40,000 @ A3

Map Identification Number
7310_COM_LZN_004C_040_20230124