



# Tamworth Regional Local Environmental Plan 2010

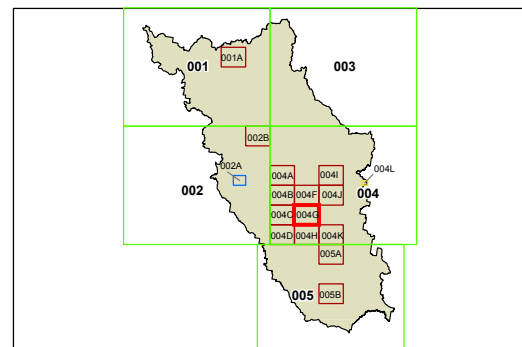
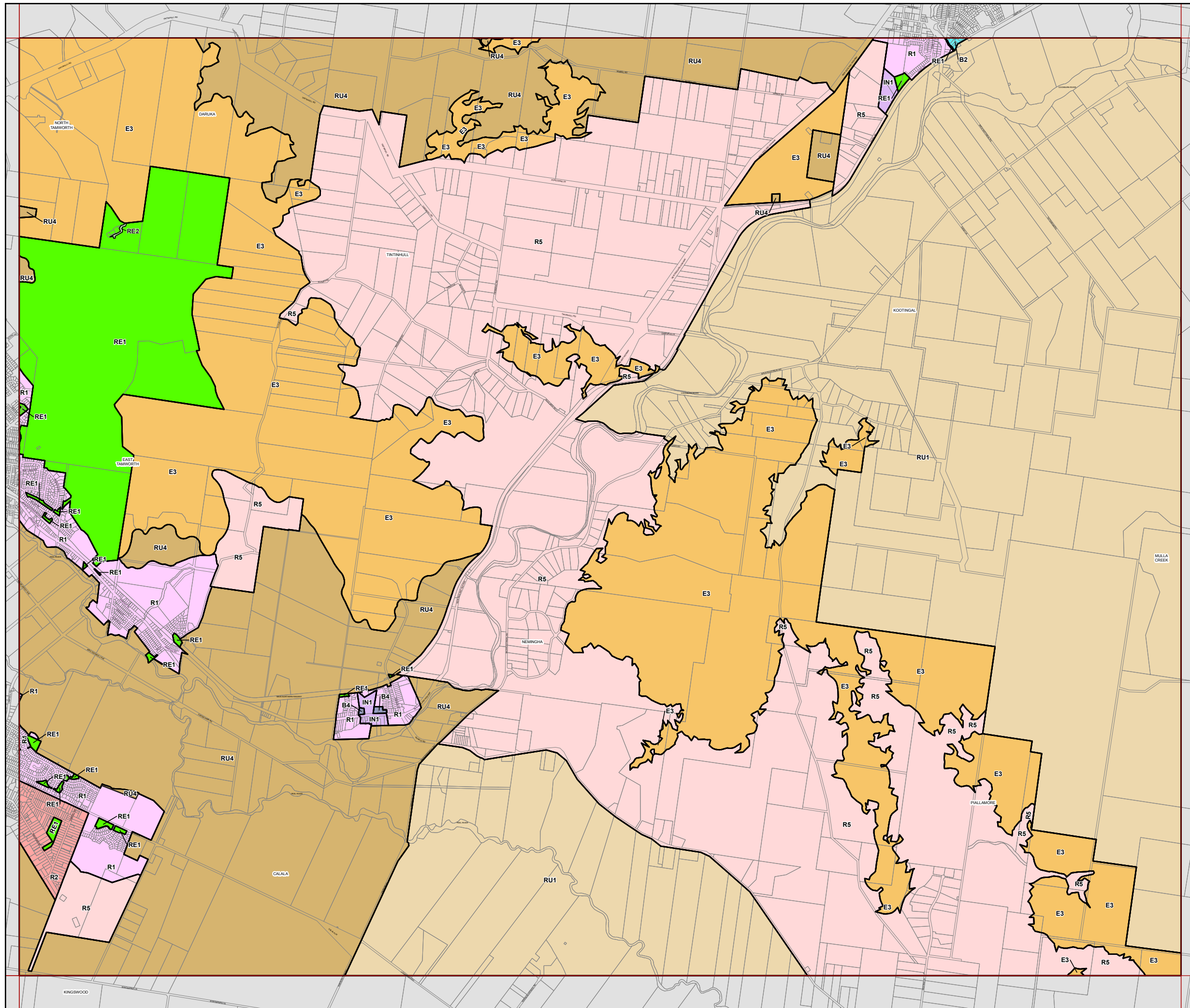
## Land Zoning Map - Sheet LZN\_004G

### Zone

- B1 Neighbourhood Centre
- B2 Local Centre
- B3 Commercial Core
- B4 Mixed Use
- B5 Business Development
- B7 Business Park
- E1 National Parks and Nature Reserves
- E2 Environmental Conservation
- E3 Environmental Management
- IN1 General Industrial
- IN3 Heavy Industrial
- R1 General Residential
- R2 Low Density Residential
- R5 Large Lot Residential
- RE1 Public Recreation
- RE2 Private Recreation
- RU1 Primary Production
- RU3 Forestry
- RU4 Rural Small Holdings
- RU5 Village
- RU6 Transition
- SP1 Special Activities
- SP2 Infrastructure
- SP3 Tourist

### Cadastre

Cadastre 01/06/2010 © NSW LPMA



0 0.5 1 Km

Scale 1:40,000 @ A3

Projection: GDA 1994

Zone 56

Map Identification Number  
7310\_COM\_LZN\_004G\_040\_20101223