



# Tweed Local Environmental Plan 2014

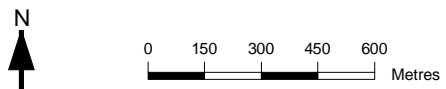
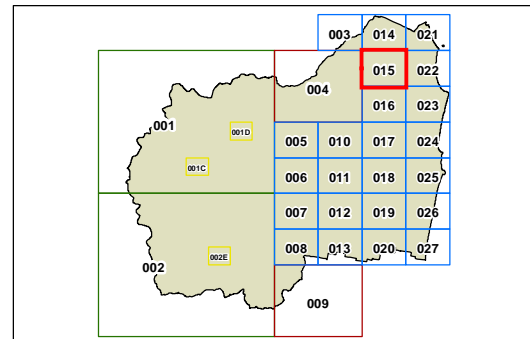
## Land Zoning Map - Sheet LZN\_015

### Zone

- B1 Neighbourhood Centre
- B2 Local Centre
- B3 Commercial Core
- B4 Mixed Use
- B5 Business Development
- B7 Business Park
- E1 National Parks & Nature Reserves
- IN1 General Industrial
- IN4 Working Waterfront
- R1 General Residential
- R2 Low Density Residential
- R3 Medium Density Residential
- R5 Large Lot Residential
- RE1 Public Recreation
- RE2 Private Recreation
- RU1 Primary Production
- RU2 Rural Landscape
- RU5 Village
- SP1 Special Activities
- SP2 Infrastructure
- SP3 Tourist
- W1 Natural Waterways
- W2 Recreational Waterways
- W3 Working Waterways
- DM Deferred Matter
- MD SEPP (Major Development) 2005
- TCC Tweed City Centre LEP 2012

### Cadastre

- Base Data 04/12/2013 © Land and Property Information
- Addendum Data 04/12/2013 © Tweed Shire Council



Projection: GDA 1994  
MGA Zone 56  
Map identification number: 7550\_COM\_LZN\_015\_020\_20140303

