



Tweed Local Environmental Plan 2014

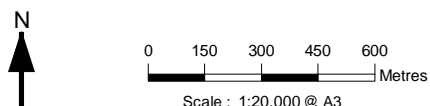
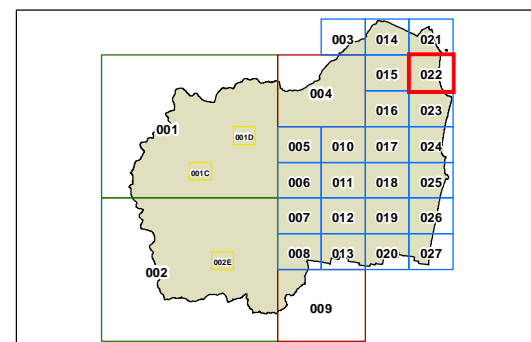
Land Zoning Map - Sheet LZN_022

Zone

- B1** Neighbourhood Centre
- B2** Local Centre
- B3** Commercial Core
- B4** Mixed Use
- B5** Business Development
- B7** Business Park
- E1** National Parks and Nature Reserves
- IN1** General Industrial
- IN4** Working Waterfront
- R1** General Residential
- R2** Low Density Residential
- R3** Medium Density Residential
- R5** Large Lot Residential
- RE1** Public Recreation
- RE2** Private Recreation
- RU1** Primary Production
- RU2** Rural Landscape
- RU5** Village
- SP1** Special Activities
- SP2** Infrastructure
- SP3** Tourist
- W1** Natural Waterways
- W2** Recreational Waterways
- W3** Working Waterways
- DM** Deferred Matter
- SSP** SEPP (State Significant Precincts) 2005
- TCC** Tweed City Centre LEP 2012

Cadastre

- Base Data 08/10/2018 © Spatial Services
- Addendum Data 08/10/2018 © Tweed Shire Council



Projection: GDA 1994
MGA Zone 56

Map identification number: 7550_COM_LZN_022_020_20181008

