



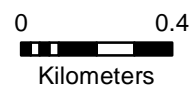
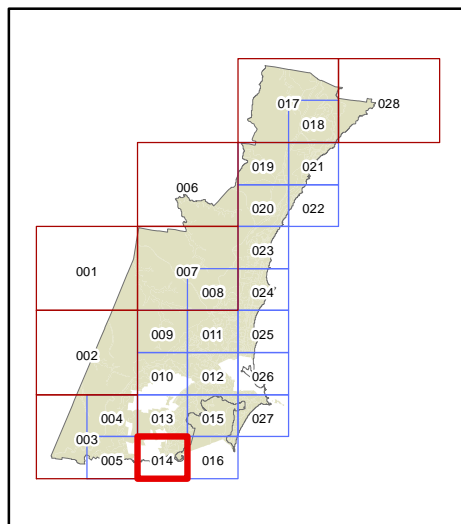
# WOLLONGONG LOCAL ENVIRONMENTAL PLAN 2009

## Land Zoning Map - sheet LZN\_014

- B1 Neighbourhood Centre
- B2 Local Centre
- B3 Commercial Core
- B4 Mixed Use
- B6 Enterprise Corridor
- B7 Business Park
- E1 National Parks & Nature Reserves
- E2 Environmental Conservation
- E3 Environmental Management
- E4 Environmental Living
- IN1 General Industrial
- IN2 Light Industrial
- IN3 Heavy Industrial
- IN4 Working Waterfront
- R1 General Residential
- R2 Low Density Residential
- R3 Medium Density Residential
- R4 High Density Residential
- R5 Large Lot Residential
- RE1 Public Recreation
- RE2 Private Recreation
- RU1 Primary Production
- RU2 Rural Landscape
- RU4 Rural Small Holdings
- SP1 Special Activities
- SP2 Infrastructure
- SP3 Tourist
- W1 Natural Waterways
- W2 Recreational Waterways
- W3 Working Waterways
- MD Major Development SEPP

### Cadastre

Cadastre 04.05.11 © Wollongong City Council



Projection: GDA 1994  
MGA Zone 56

Scale 1:20,000 @ A3

Map Identification number: 8450\_COM\_LZN\_014\_020\_20110525

