

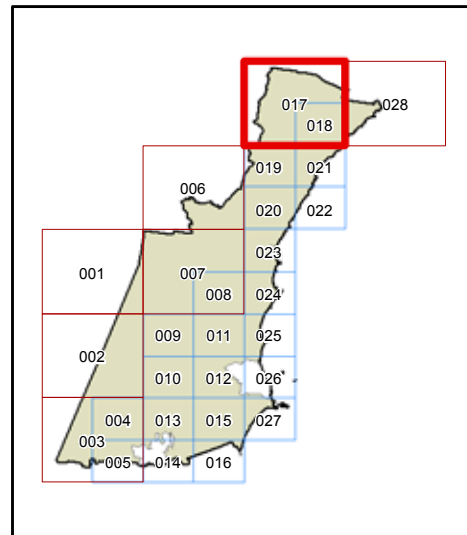


WOLLONGONG LOCAL ENVIRONMENTAL PLAN 2009

Land Zoning Map - sheet LZN_017

- B1** Neighbourhood Centre
- B2** Local Centre
- B3** Commercial Core
- B4** Mixed Use
- B6** Enterprise Corridor
- B7** Business Park
- E1** National Parks & Nature Reserves
- E2** Environmental Conservation
- E3** Environmental Management
- E4** Environmental Living
- IN1** General Industrial
- IN2** Light Industrial
- IN3** Heavy Industrial
- IN4** Working Waterfront
- R1** General Residential
- R2** Low Density Residential
- R3** Medium Density Residential
- R4** High Density Residential
- R5** Large Lot Residential
- RE1** Public Recreation
- RE2** Private Recreation
- RU1** Primary Production
- RU2** Rural Landscape
- RU4** Primary Production Small Lots
- SP1** Special Activities
- SP2** Infrastructure
- SP3** Tourist
- W1** Natural Waterways
- W2** Recreational Waterways
- W3** Working Waterways
- MD** SEPP (Major Development) 2005
- PK** SEPP (Three Ports) 2013
- DM** Deferred Matter

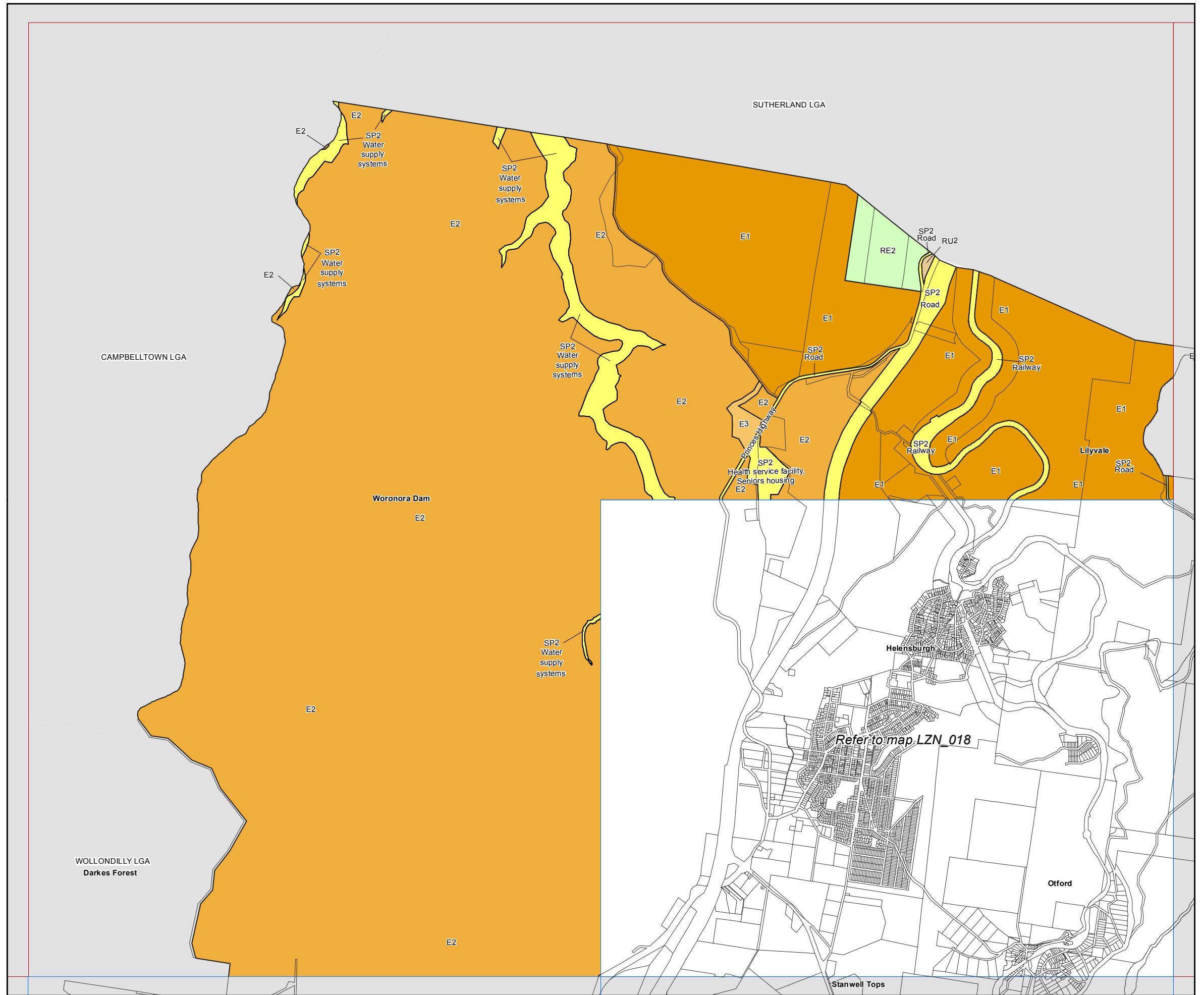
Cadastre
 Cadastre 17.10.14 © Wollongong City Council



Projection: GDA 1994
MGA Zone 56

Scale 1:40,000 @ A3

Map Identification number: 8450_COM_LZN_017_040_20141017



Refer to map LZN_018