



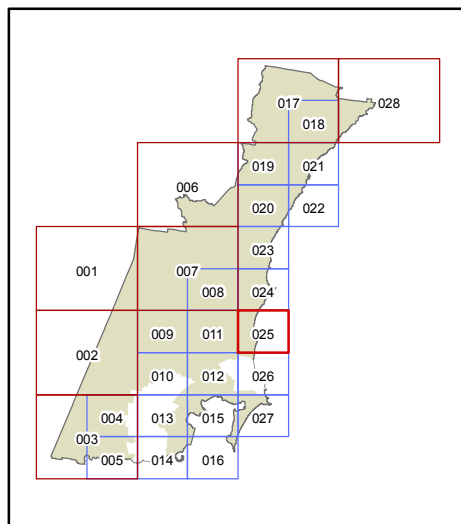
WOLLONGONG LOCAL ENVIRONMENTAL PLAN 2009

Land Zoning Map - sheet LZN_025

- B1** Neighbourhood Centre
- B2** Local Centre
- B3** Commercial Core
- B4** Mixed Use
- B6** Enterprise Corridor
- B7** Business Park
- E1** National Parks & Nature Reserves
- E2** Environmental Conservation
- E3** Environmental Management
- E4** Environmental Living
- IN1** General Industrial
- IN2** Light Industrial
- IN3** Heavy Industrial
- IN4** Working Waterfront
- R1** General Residential
- R2** Low Density Residential
- R3** Medium Density Residential
- R4** High Density Residential
- R5** Large Lot Residential
- RE1** Public Recreation
- RE2** Private Recreation
- RU1** Primary Production
- RU2** Rural Landscape
- RU4** Rural Small Holdings
- SP1** Special Activities
- SP2** Infrastructure
- SP3** Tourist
- W1** Natural Waterways
- W2** Recreational Waterways
- W3** Working Waterways
- MD** Major Developments SEPP

Cadastre

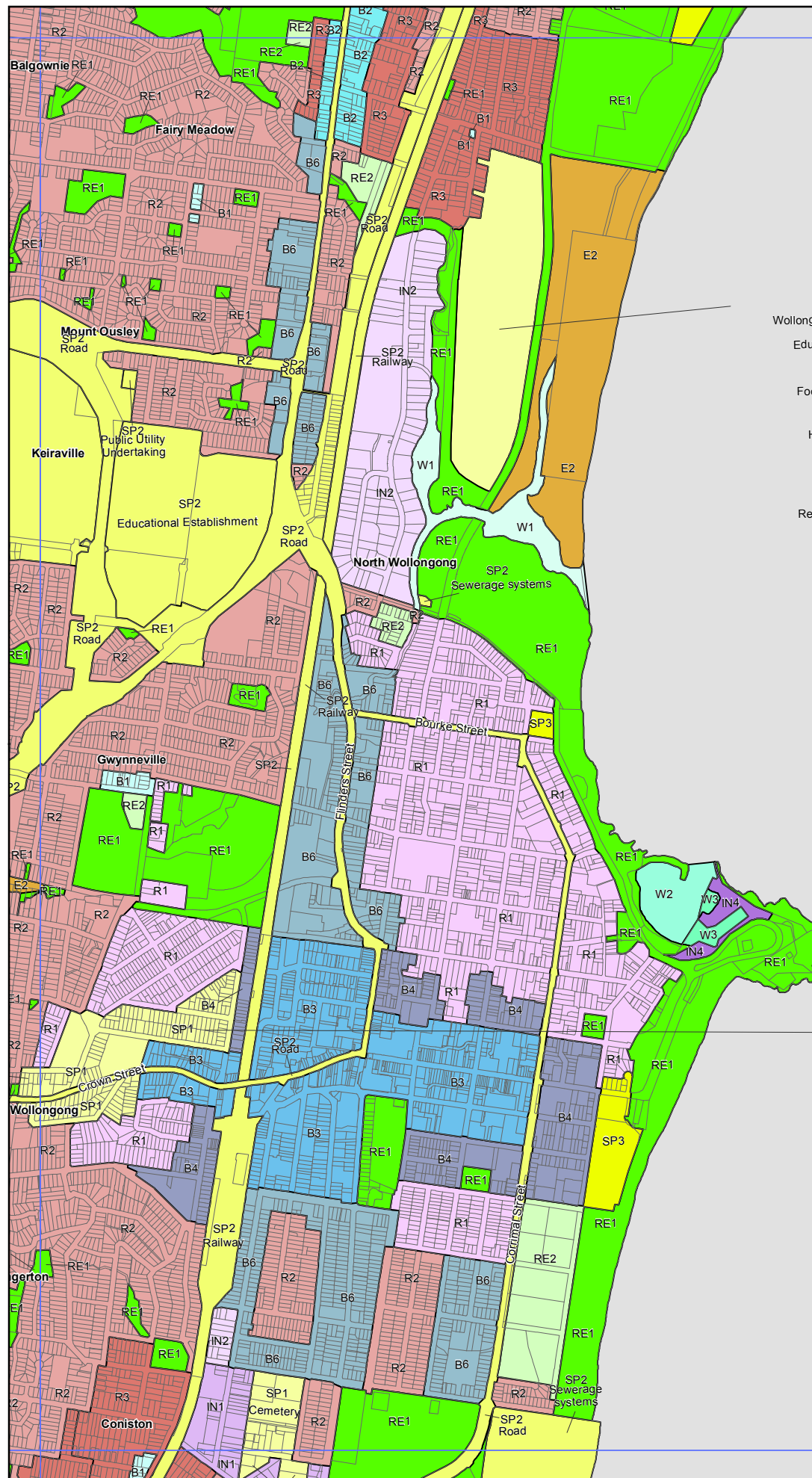
Cadastre 28.10.09 © Wollongong City Council



Projection: GDA 1994
MGA Zone 56

Scale 1:20,000 @ A3

Map Identification number: 8450_COM_LZN_025_020_20091204



- SP1**
Wollongong Innovation Campus:
Educational Establishment,
Boarding Houses,
Food and Drink Premises,
Business Premises,
Hotel or Motel Accommodation,
Light Industries,
Neighbourhood Shops,
Office Premises,
Recreation Facilities (major),
Serviced Apartments,
Veterinary Hospitals.

- SP1**
Wollongong Hospital Precinct:
Boarding Houses,
Dwelling Houses,
Food and Drink Premises,
Helipads,
Neighbourhood Shops,
Funeral Chapels,
Funeral Homes,
Hostels,
Mortuaries,
Multi Dwelling Housing,
Place of Public Worship,
Residential Flat Buildings,
Seniors Housing,
Shop top Housing.