



# WOLLONGONG LOCAL ENVIRONMENTAL PLAN 2009

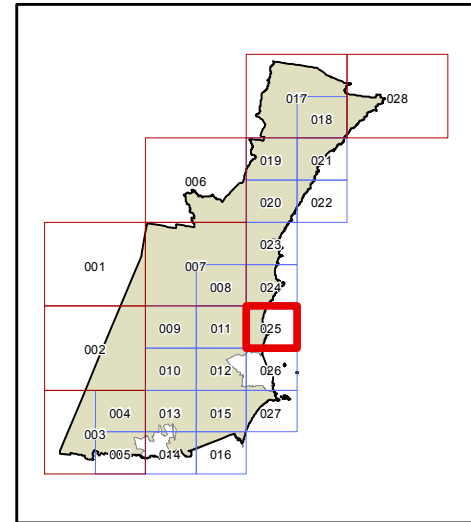
## Land Zoning Map - Sheet LZN\_025

### Zone

- B1 Neighbourhood Centre
- B2 Local Centre
- B3 Commercial Core
- B4 Mixed Use
- B6 Enterprise Corridor
- B7 Business Park
- E1 National Parks & Nature Reserves
- E2 Environmental Conservation
- E3 Environmental Management
- E4 Environmental Living
- IN1 General Industrial
- IN2 Light Industrial
- IN3 Heavy Industrial
- IN4 Working Waterfront
- R1 General Residential
- R2 Low Density Residential
- R3 Medium Density Residential
- R4 High Density Residential
- R5 Large Lot Residential
- RE1 Public Recreation
- RE2 Private Recreation
- RU1 Primary Production
- RU2 Rural Landscape
- RU4 Primary Production Small Lots
- SP1 Special Activities
- SP2 Infrastructure
- SP3 Tourist
- W1 Natural Waterways
- W2 Recreational Waterways
- W3 Working Waterways
- MD SEPP (Major Development) 2005
- PK SEPP (Port Botany and Port Kembla) 2013
- DM Deferred Matter

### Cadastre

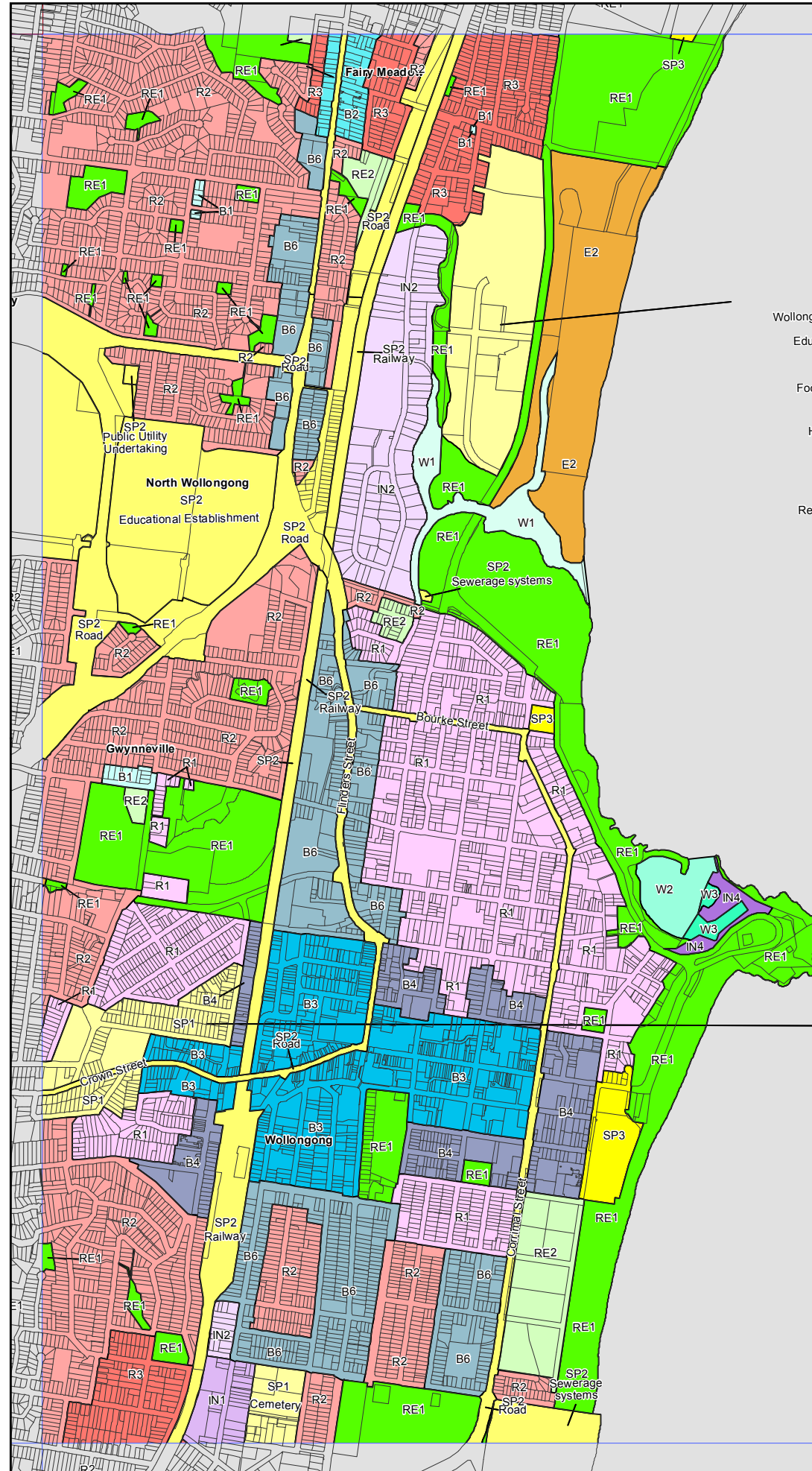
Cadastre 13.05.15 © Wollongong City Council



Projection: GDA 1994  
MGA Zone 56

Scale 1:20,000 @ A3

Map Identification number: 8450\_COM\_LZN\_025\_020\_20150513



- SP1  
Wollongong Innovation Campus:
- Educational Establishment.
  - Boarding Houses.
  - Food and Drink Premises.
  - Business Premises.
  - Hotel or Motel Accommodation.
  - Light Industries.
  - Neighbourhood Shops.
  - Office Premises.
  - Recreation Facilities (major).
  - Serviced Apartments.
  - Veterinary Hospitals.

- SP1  
Wollongong Hospital Precinct:
- Boarding Houses.
  - Dwelling Houses.
  - Food and Drink Premises.
  - Helipads.
  - Neighbourhood Shops.
  - Funeral Chapels.
  - Funeral Homes.
  - Hostels.
  - Mortuaries.
  - Multi Dwelling Housing.
  - Place of Public Worship.
  - Residential Flat Buildings.
  - Seniors Housing.
  - Shop top Housing.