



WOLLONGONG LOCAL ENVIRONMENTAL PLAN 2009

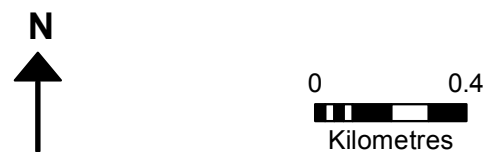
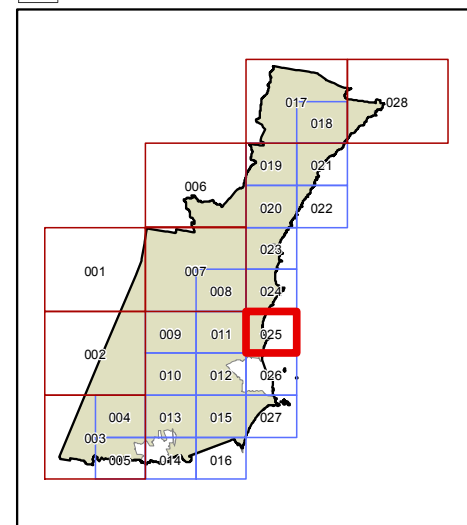
Land Zoning Map - Sheet LZN_025

Zone

- B1 Neighbourhood Centre
- B2 Local Centre
- B3 Commercial Core
- B4 Mixed Use
- B6 Enterprise Corridor
- B7 Business Park
- E1 National Parks & Nature Reserves
- E2 Environmental Conservation
- E3 Environmental Management
- E4 Environmental Living
- IN1 General Industrial
- IN2 Light Industrial
- IN3 Heavy Industrial
- IN4 Working Waterfront
- R1 General Residential
- R2 Low Density Residential
- R3 Medium Density Residential
- R4 High Density Residential
- R5 Large Lot Residential
- RE1 Public Recreation
- RE2 Private Recreation
- RU1 Primary Production
- RU2 Rural Landscape
- RU4 Primary Production Small Lots
- SP1 Special Activities
- SP2 Infrastructure
- SP3 Tourist
- W1 Natural Waterways
- W2 Recreational Waterways
- W3 Working Waterways
- SSP SEPP (State Significant Precincts) 2005
- TP SEPP (Three Ports) 2013

Cadastre

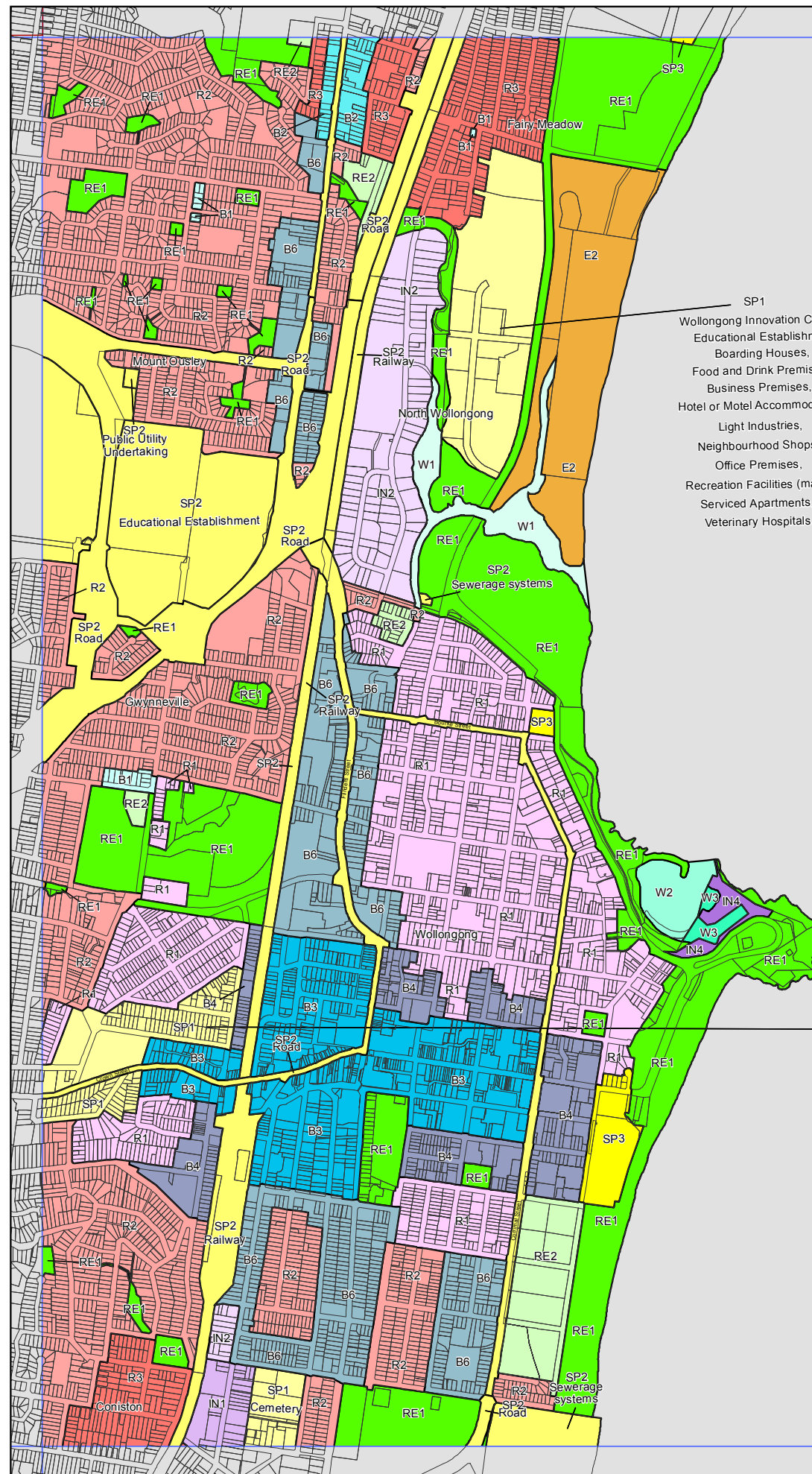
Cadastre 18.06.19 © Wollongong City Council



Projection: GDA 1994
MGA Zone 56

Scale 1:20,000 @ A3

Map Identification number: 8450_COM_LZN_025_020_20190618



SP1
Wollongong Innovation Campus:
Educational Establishment,
Boarding Houses,
Food and Drink Premises,
Business Premises,
Hotel or Motel Accommodation,
Light Industries,
Neighbourhood Shops,
Office Premises,
Recreation Facilities (major),
Serviced Apartments,
Veterinary Hospitals.

SP1
Wollongong Hospital Precinct:
Boarding Houses,
Dwelling Houses,
Food and Drink Premises,
Helipads,
Neighbourhood Shops,
Funeral Chapels,
Funeral Homes,
Hostels,
Mortuaries,
Multi Dwelling Housing,
Place of Public Worship,
Residential Flat Buildings,
Seniors Housing,
Shop top Housing.