



WOLLONGONG LOCAL ENVIRONMENTAL PLAN 2009

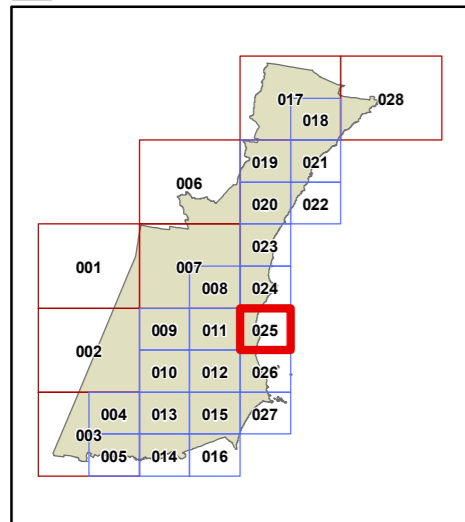
Land Zoning Map - Sheet LZN_025

Zone

- C1 National Parks & Nature Reserves
- C2 Environmental Conservation
- C3 Environmental Management
- C4 Environmental Living
- E1 Local Centre
- E2 Commercial Centre
- E3 Productivity Support
- E4 General Industrial
- E5 Heavy Industrial
- MU1 Mixed Use
- R1 General Residential
- R2 Low Density Residential
- R3 Medium Density Residential
- R4 High Density Residential
- R5 Large Lot Residential
- RE1 Public Recreation
- RE2 Private Recreation
- RU1 Primary Production
- RU2 Rural Landscape
- RU4 Primary Production Small Lots
- SP1 Special Activities
- SP2 Infrastructure
- SP3 Tourist
- W1 Natural Waterways
- W2 Recreational Waterways
- W3 Working Waterways
- W4 Working Waterfront
- PRE SEPP (Precincts-Regional) 2021
- TIN SEPP (Transport and Infrastructure) 2021

Cadastre

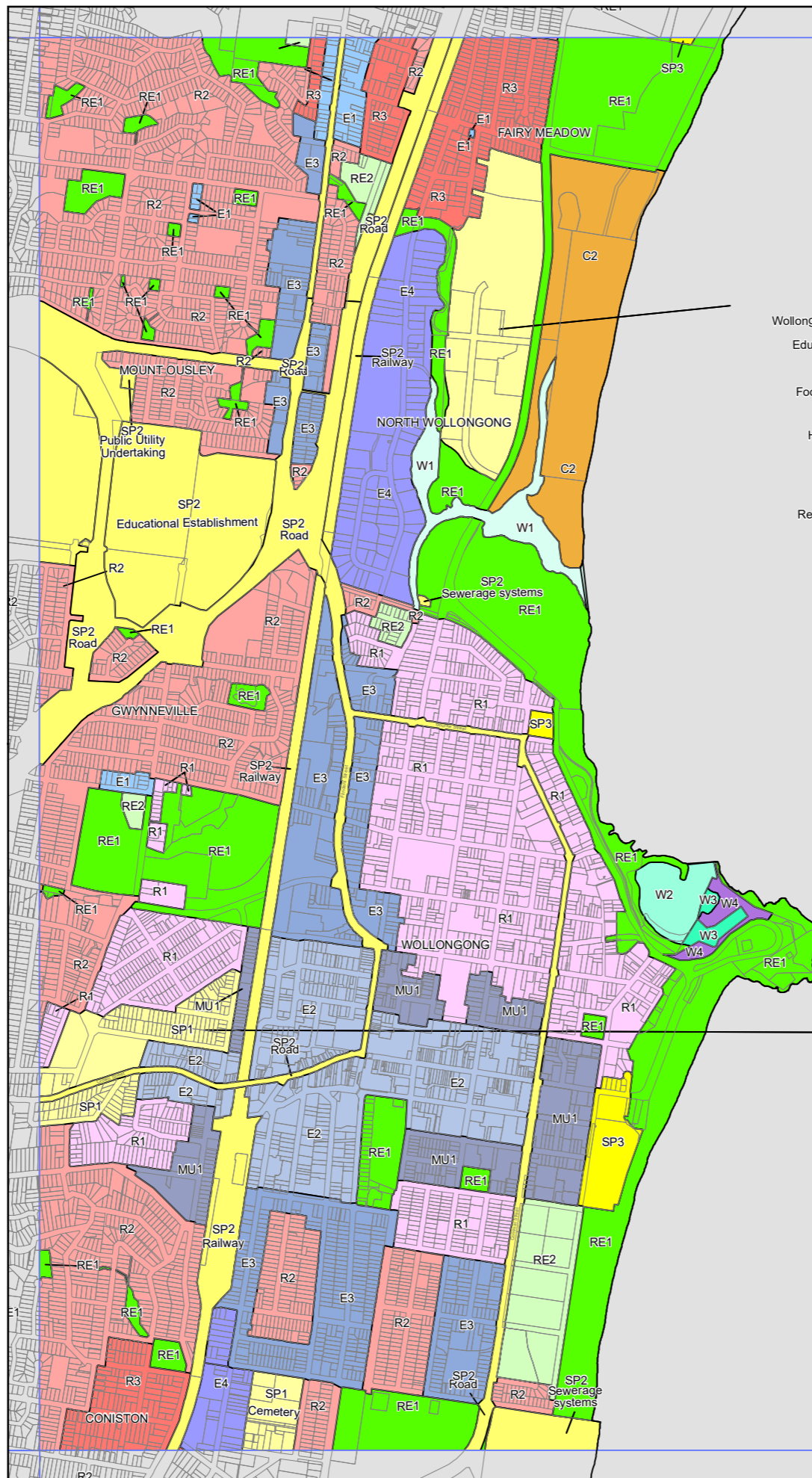
— Cadastre 25/10/22 © Wollongong City Council



Projection: GDA 2020
MGA Zone 56

Scale 1:20,000 @ A3

Map Identification number: 8450_COM_LZN_025_020_20221025



- SP1
Wollongong Innovation Campus:
- Educational Establishment.
 - Boarding Houses.
 - Food and Drink Premises.
 - Business Premises.
 - Hotel or Motel Accommodation.
 - Light Industries.
 - Neighbourhood Shops.
 - Office Premises.
 - Recreation Facilities (major).
 - Serviced Apartments.
 - Veterinary Hospitals.

- SP1
Wollongong Hospital Precinct:
- Boarding Houses.
 - Dwelling Houses.
 - Food and Drink Premises.
 - Helipads.
 - Neighbourhood Shops.
 - Funeral Chapels.
 - Funeral Homes.
 - Hostels.
 - Mortuaries.
 - Multi Dwelling Housing.
 - Place of Public Worship.
 - Residential Flat Buildings.
 - Seniors Housing.
 - Shop top Housing.