



Wyong Shire Council

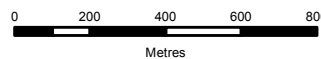
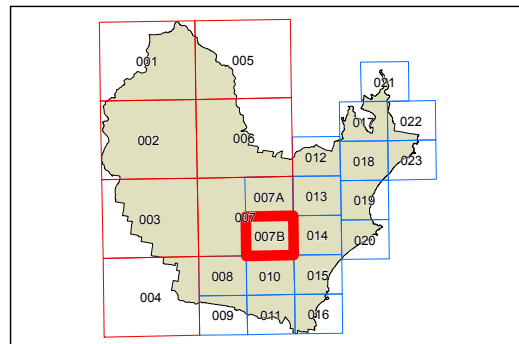
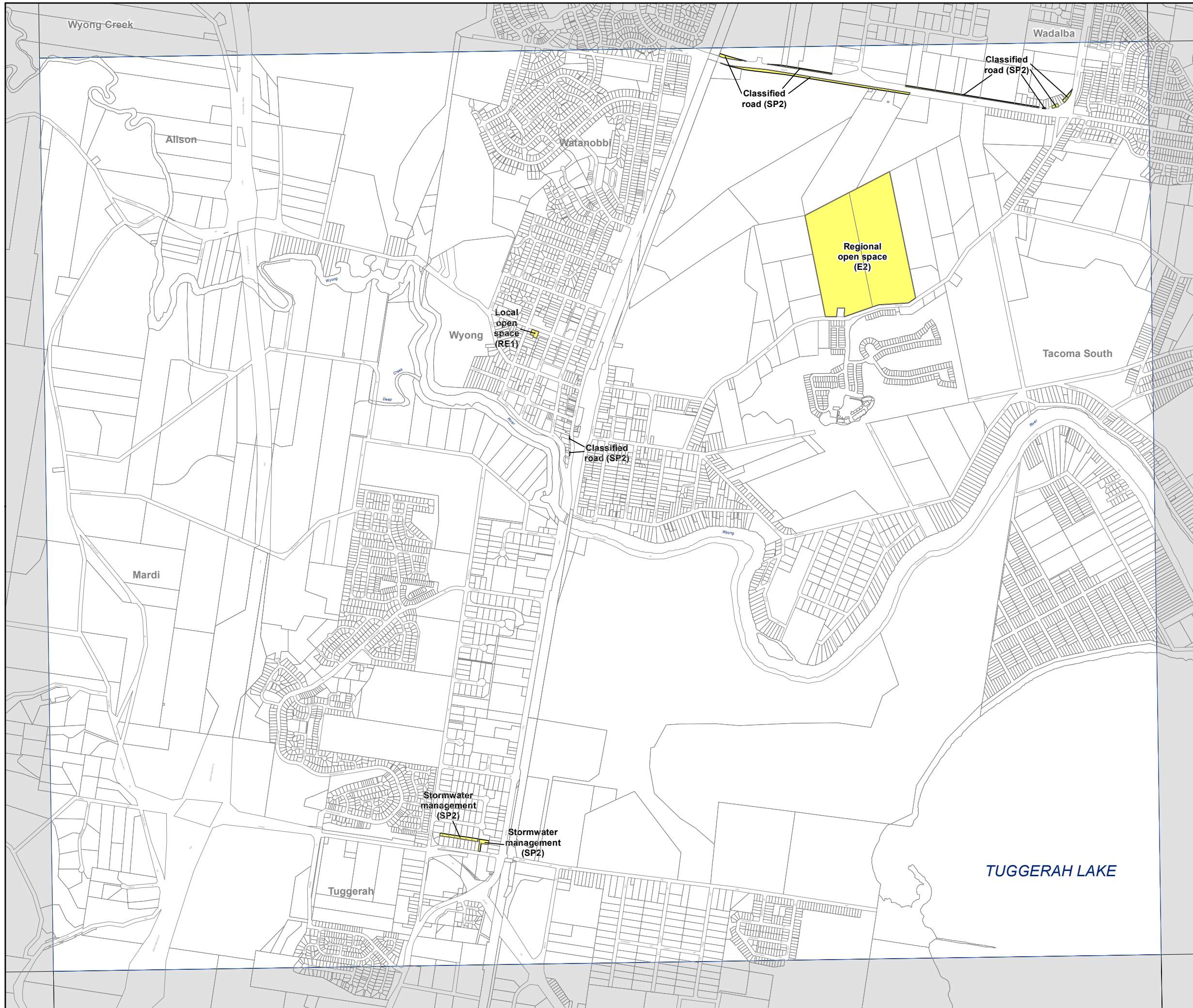
Wyong Local Environmental Plan 2013

Land Reservation Acquisition Map - Sheet LRA_007B

- Carpark (B4)
- Classified road (SP2)
- Environmental conservation (E2)
- Health services facilities (SP2)
- Local open space (RE1)
- Local road (SP2)
- National parks and nature reserves (E1)
- Regional open space (E2)
- Sewer buffer (SP2)
- Stormwater management (E2)
- Stormwater management (E3)
- Stormwater management (SP2)

Cadastre

Cadastre 1/11/2015 © Land and Property Information (LPI)



Projection: GDA 1994
MGA Zone 56

Scale: 1:20,000 @ A3

Map identification number:
8550_COM_LRA_007B_020_20151116