



Wyong Shire Council

Wyong Local Environmental Plan 2013

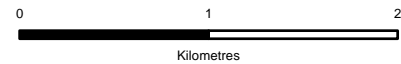
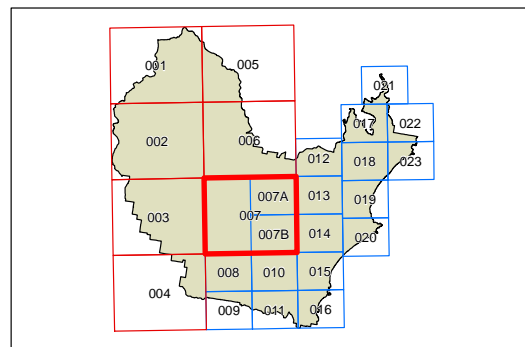
Land Zoning Map - Sheet LZN_007

Zone

- B1 Neighbourhood Centre
- B2 Local Centre
- B3 Commercial Core
- B4 Mixed Use
- B5 Business Development
- B6 Enterprise Corridor
- B7 Business Park
- E1 National Parks and Nature Reserves
- E2 Environmental Conservation
- E3 Environmental Management
- E4 Environmental Living
- IN1 General Industrial
- IN2 Light Industrial
- R1 General Residential
- R2 Low Density Residential
- R3 Medium Density Residential
- R5 Large Lot Residential
- RE1 Public Recreation
- RE2 Private Recreation
- RU1 Primary Production
- RU2 Rural Landscape
- RU3 Forestry
- RU5 Village
- RU6 Transition
- SP1 Special Activities
- SP2 Infrastructure
- SP3 Tourist
- W1 Natural Waterways
- W2 Recreational Waterways

Cadastre

□ Cadastre 11/02/2018 © Spatial Services



Projection: GDA 1994
MGA Zone 56

Scale: 1:40,000 @ A3

Map identification number:
8550_COM_LZN_007_040_20180517

