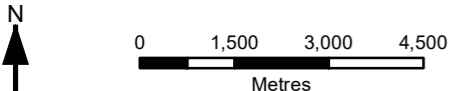
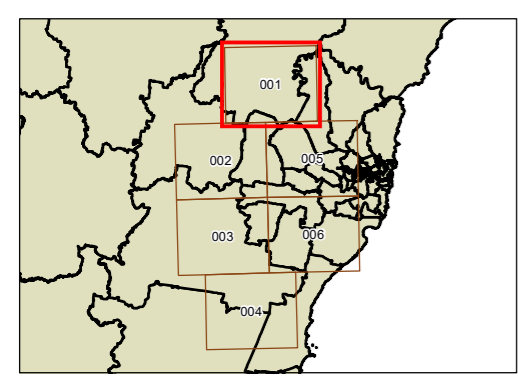
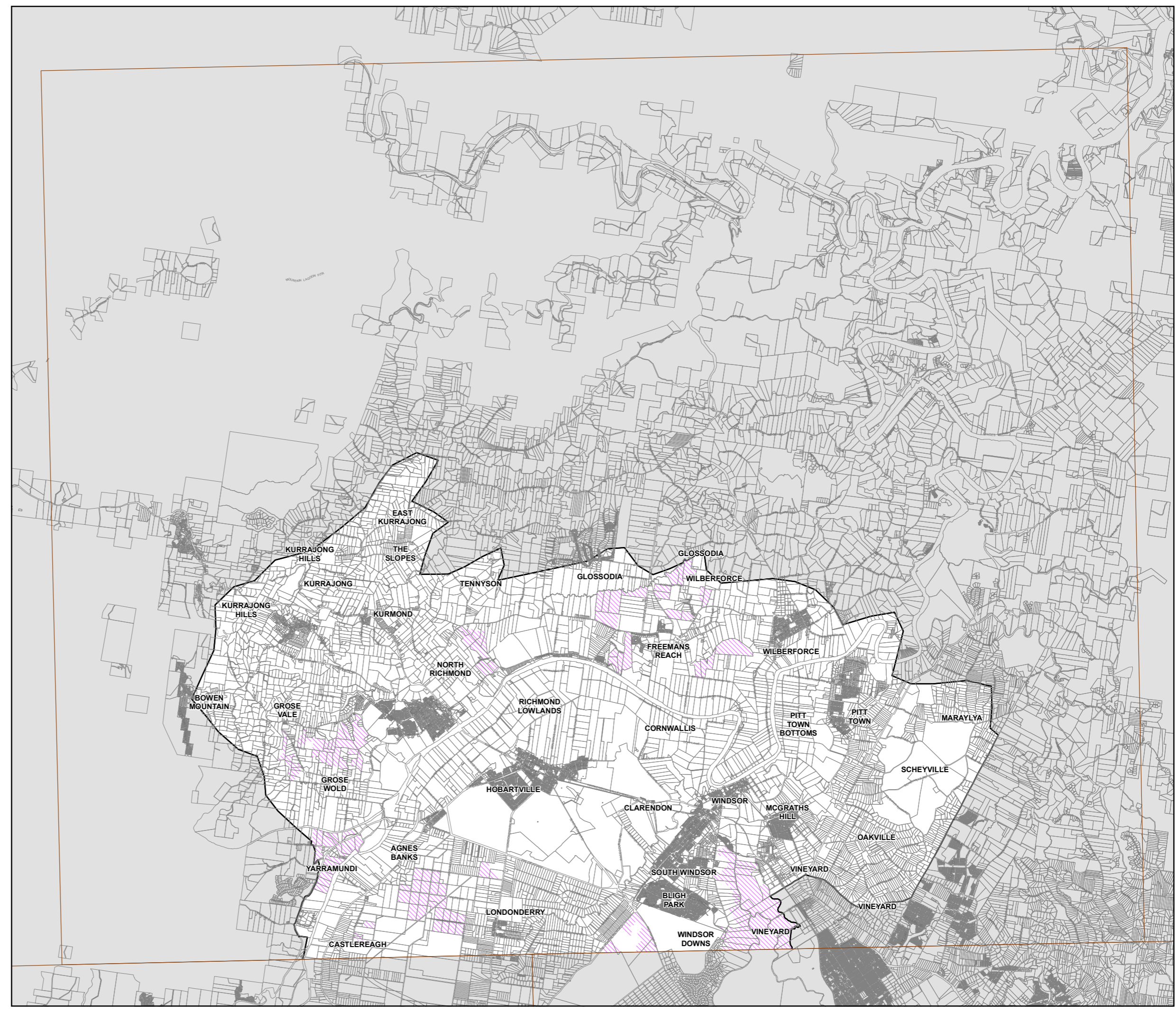




State Environmental Planning Policy (Biodiversity and Conservation) 2021 Strategic Conservation Planning

Avoided Land Map - Sheet SCA_001

-  Land Application
-  Strategic Conservation Area
- Cadastral**
-  Cadastral 16/05/2022 © Spatial Services



Projection: GDA 1994 MGA Zone 56 Scale: 1:120,000 @ A3

Map Identification Number: SEPP_BAC_SCP_SCA_001_20221007