

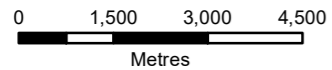
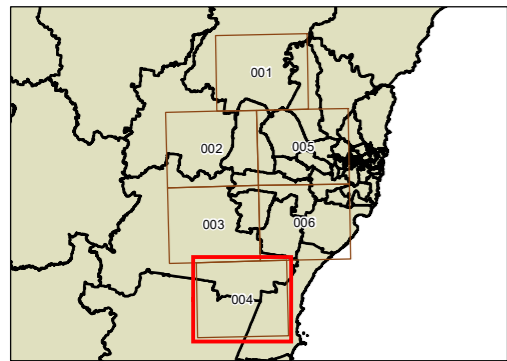
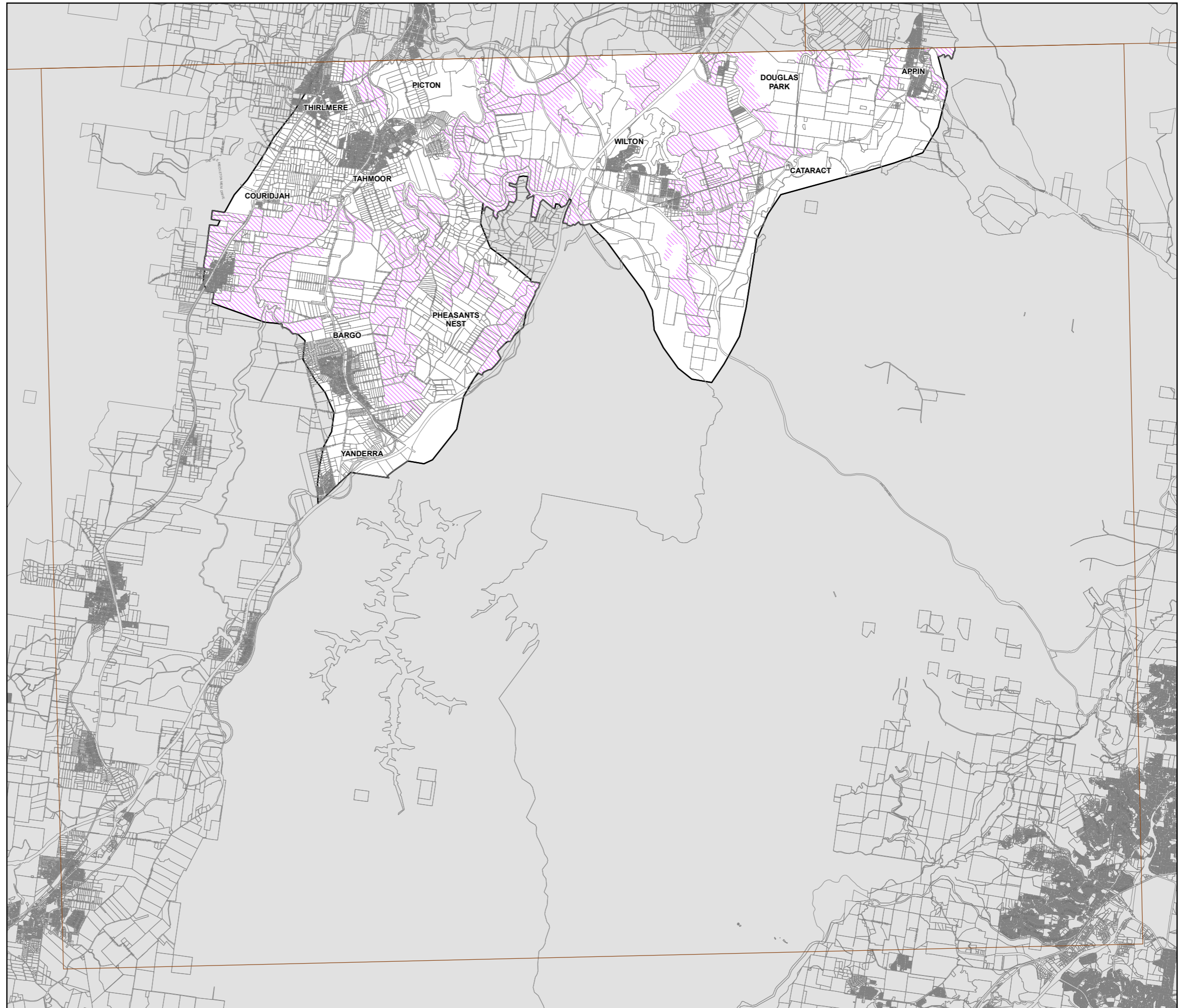


Planning and Environment

# State Environmental Planning Policy (Biodiversity and Conservation) 2021 Strategic Conservation Planning

Strategic Conservation Area Map - Sheet SCA\_004

- Land Application
- Strategic Conservation Area
- Cadastral**
  - Cadastral 16/05/2022 © Spatial Services



Projection: GDA 1994  
MGA Zone 56  
Scale: 1:120,000 @ A3

Map Identification Number: SEPP\_BAC\_SCP\_SCA\_004\_20221007