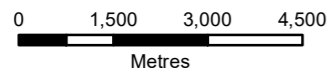
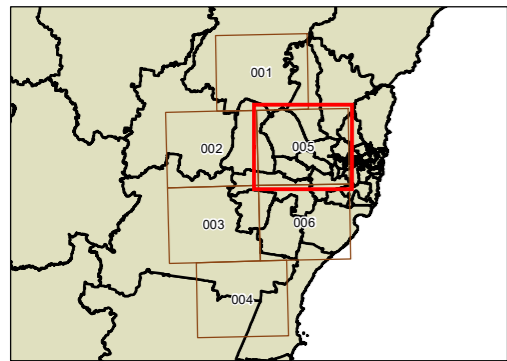
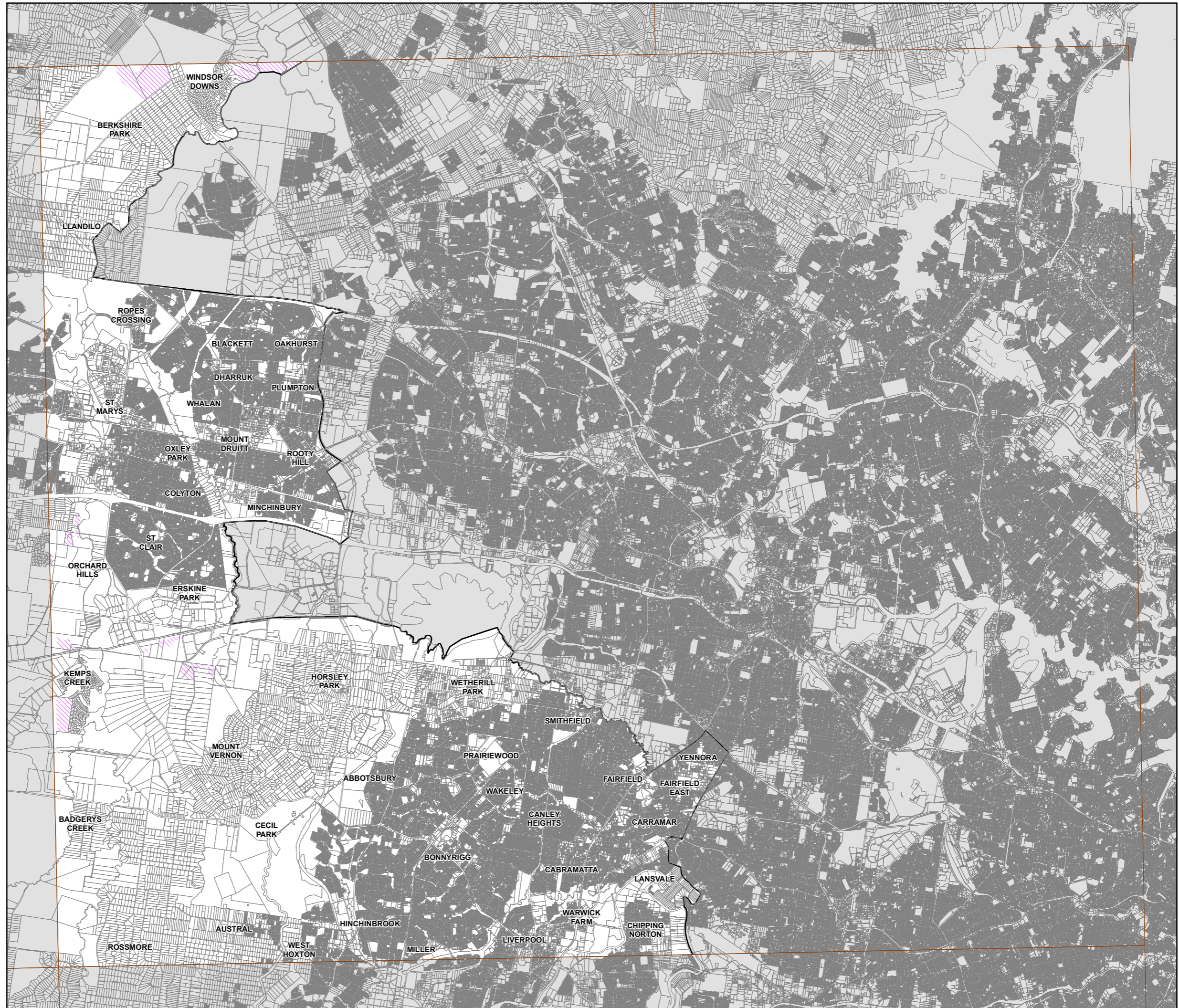




State Environmental Planning Policy (Biodiversity and Conservation) 2021 Strategic Conservation Planning

Strategic Conservation Area Map - Sheet SCA_005

- Land Application
 - Strategic Conservation Area
- Cadastral**
- Cadastral 16/05/2022 © Spatial Services



Projection: GDA 1994
MGA Zone 56

Scale: 1:120,000 @ A3

Map Identification Number: SEPP_BAC_SCP_SCA_005_20221007