



State Environmental Planning Policy (Exempt and Complying Development Codes) 2008

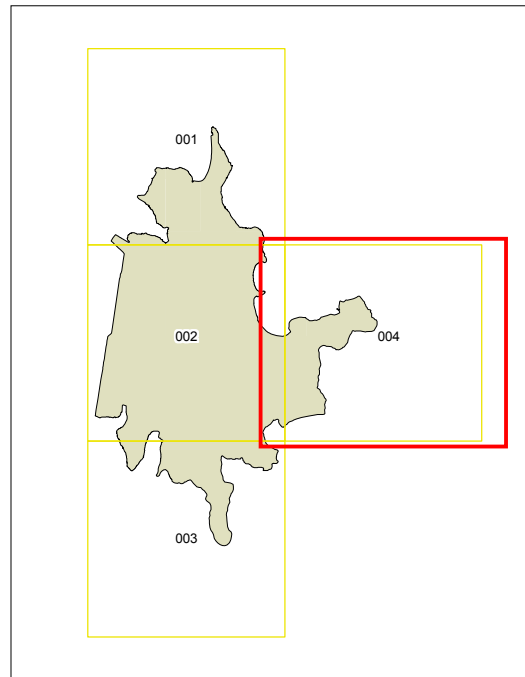
Mosman Complying Development Land Map - Sheet LCD_004

LEGEND

Complying Local Exclusion

Cadastral

Cadastral 01/06/10 © NSW LPMA



200 0 200 metres
Scale: 1:10,000 @ A3

Projection GDA 1994
MGA Zone 56

Map identification number
SEPP_ECD_5350_LCD_004_20101022

