





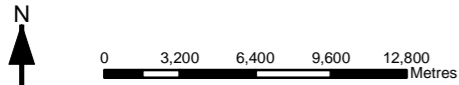
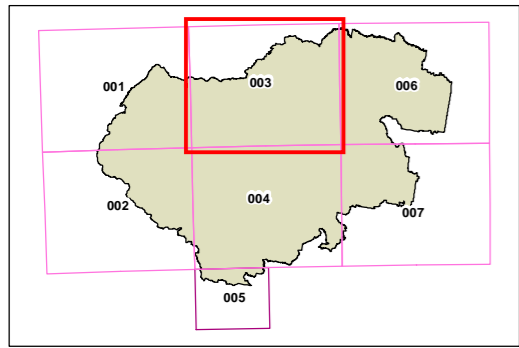
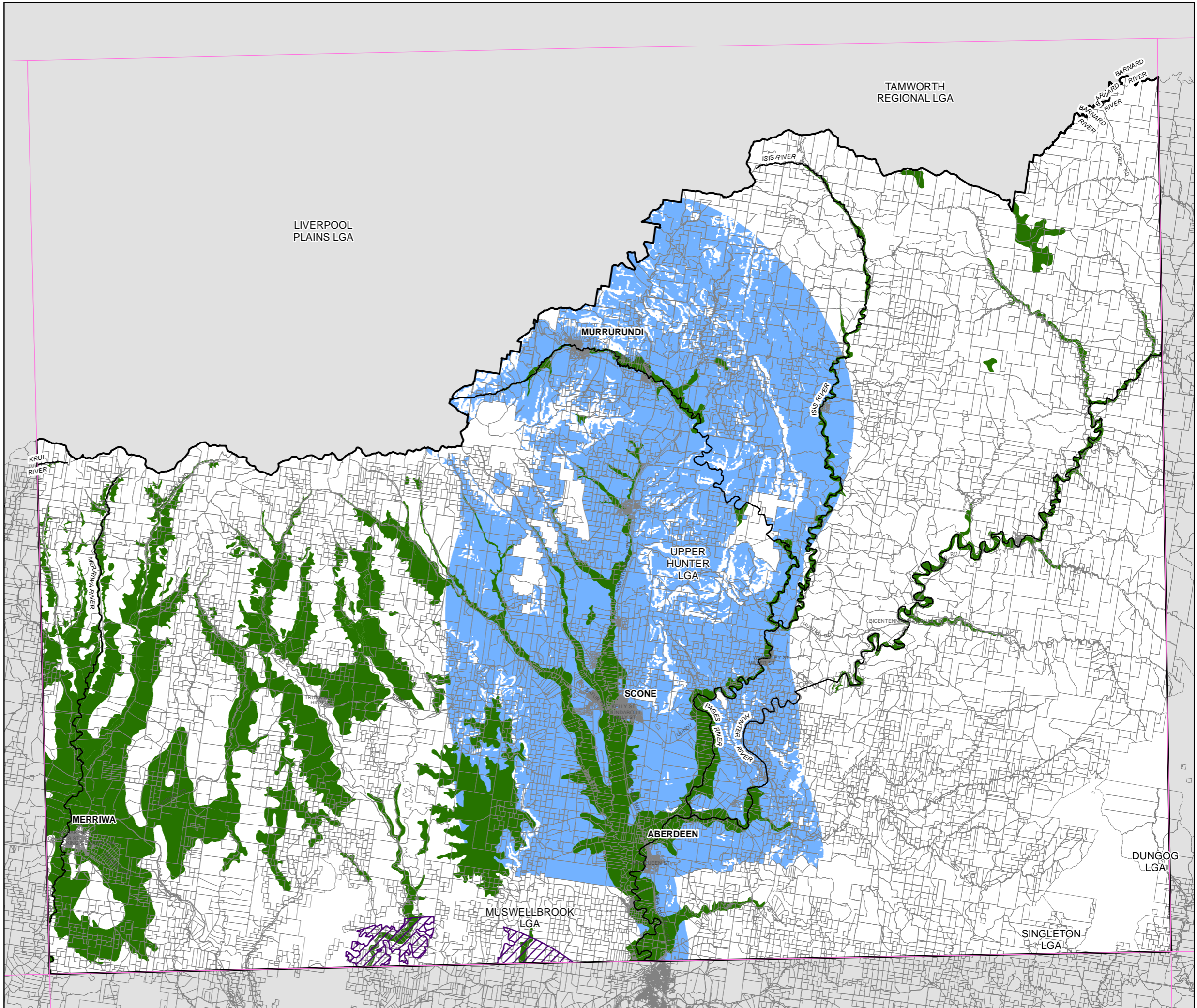
State Environmental Planning Policy (Mining, Petroleum Production and Extractive Industries) 2007

Upper Hunter Region

Strategic Agricultural Land Map - Sheet STA_003

Legend

-  Biophysical Strategic Agricultural Land
-  Critical Industry Cluster Land (Viticulture)
-  Critical Industry Cluster Land (Equine)
- Cadastral**
-  Cadastral 12/2/2013 © Land and Property Information (LPI)



Projection: GDA 1994
MGA Zone 56

Map identification number: SEPP_MPEI_UH_STA_003_320_20130228