





Planning and Environment

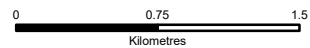
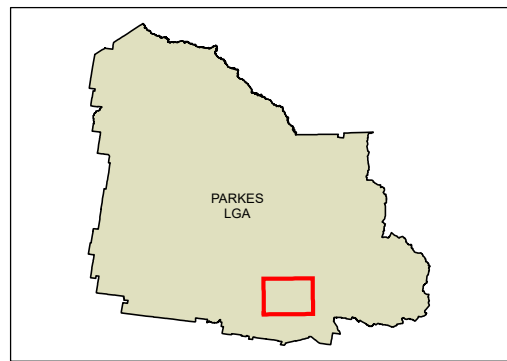
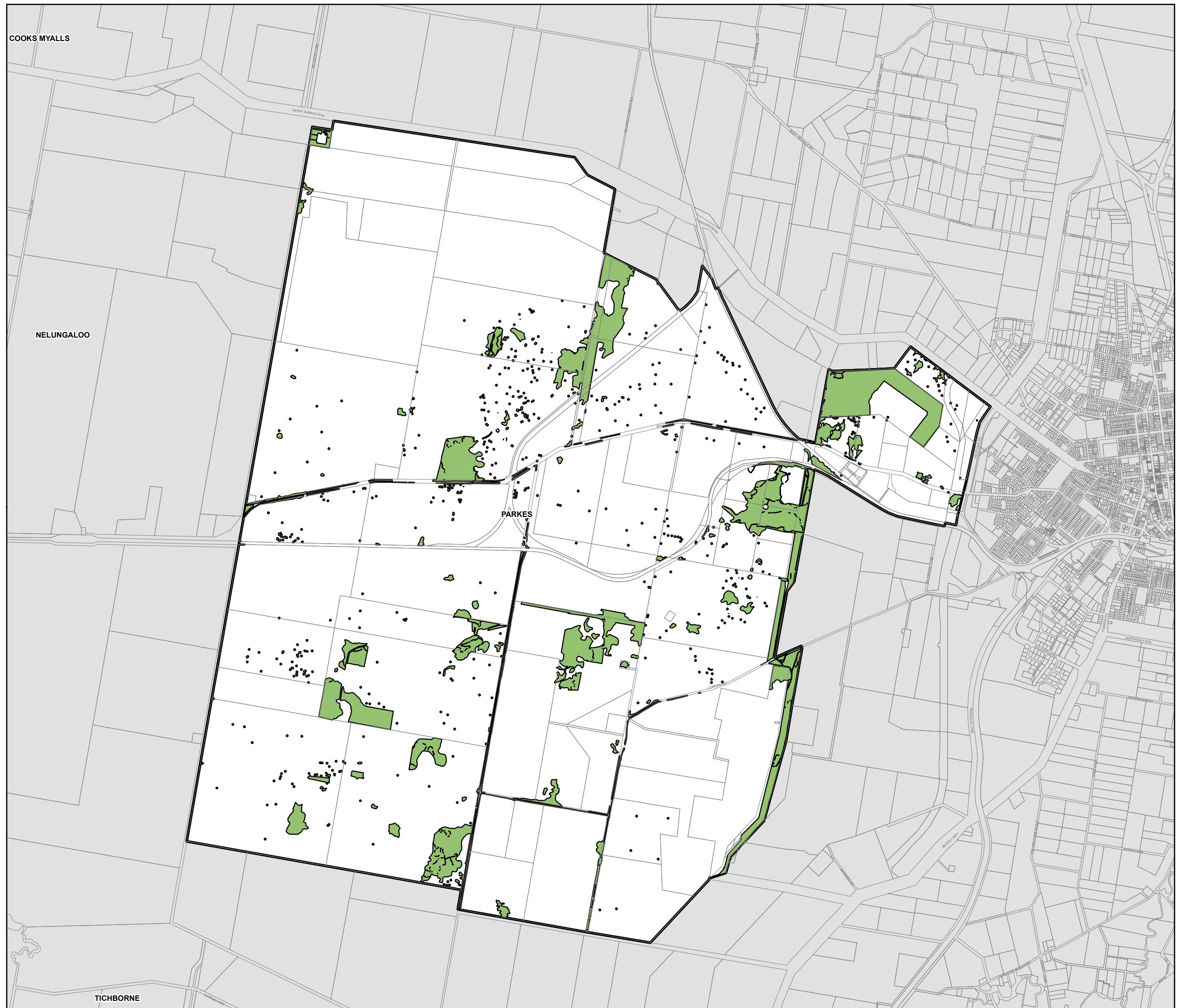
State Environmental Planning Policy (Precincts—Regional) 2021
Parkes Activation Precinct

Environmentally Sensitive Areas
Map - Sheet BIO_001

 Environmentally Sensitive Area

Cadastre

 Cadastre 19/05/2022 © Spatial Services



Projection: GDA 1994
MGA Zone 55

Scale: 1:40,000 @ A3

Map Identification Number: SEPP_PRE_ACP_BIO_001_20220519