



State Environmental Planning Policy (Sydney Region Growth Centres) 2006

North West Growth Centre Floor Space Ratio Map - Sheet FSR_005

Maximum Floor Space Ratio (n:1)

B	0.4
D	0.5
F	0.6
H	0.7
I	0.75
N	1
P	1.25
S	1.75
T	2
U	2.75
V	3
W	3.5

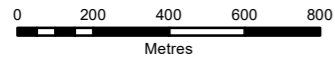
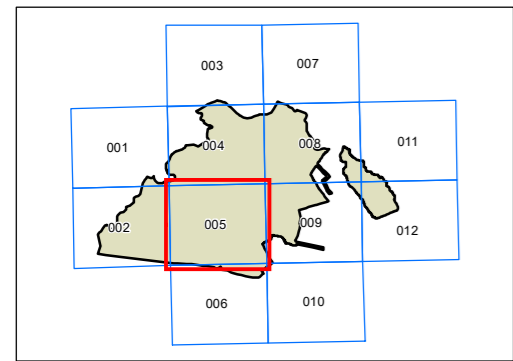
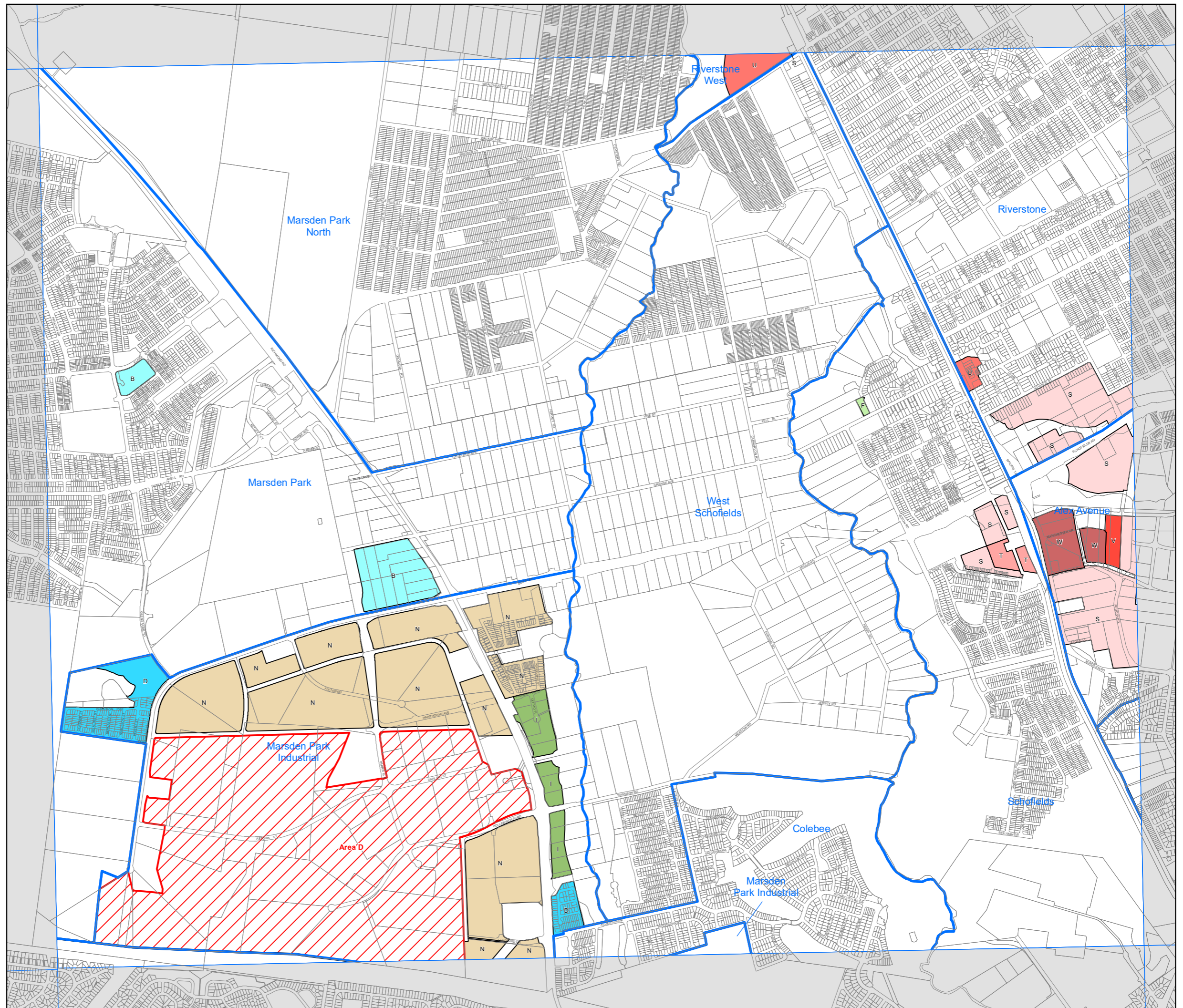
- Refer to Appendix 11, Clause 4.4A
- Refer to Appendix 11, Clause 4.4A
- Refer to Appendix 11, Clause 4.4A
- Refer to Appendix 5, Clause 4.5B

Growth Centre Boundaries

- North West Growth Centre Boundary
- North West Growth Centre Precinct Boundary

Cadastral

Cadastre 14/11/2022 © Spatial Services



Projection: GDA 1994
MGA Zone 56

Scale: 1:20,000 @ A3

Map Identification Number: SEPP_SRGC_NW_FSR_005_020_20221114