



State Environmental Planning Policy (Sydney Region Growth Centres) 2006

North West Growth Centre Land Reservation Acquisition Map - Sheet LRA_004

Land Reservation Acquisition

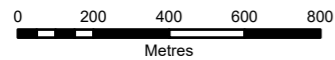
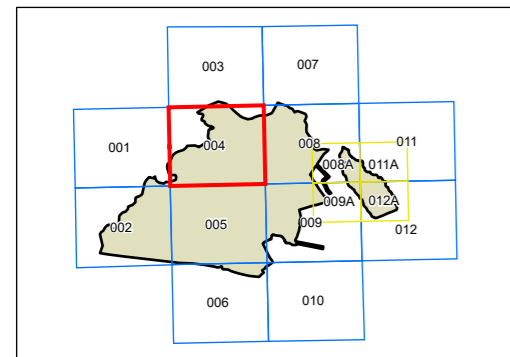
- Bus Only Link (SP2)
- Classified Road (SP2)
- Classified Road Widening (SP2)
- Community Centre (SP2)
- Community Facilities (B2)
- Community Facilities (B4)
- Community Facilities (SP2)
- Environmental Conservation (E2)
- Footpath (SP2)
- Local Drainage (SP2)
- Local Open Space (B2)
- Local Open Space (B4)
- Local Open Space (RE1)
- Local Road (SP2)
- Local Road Widening (SP2)
- Public Recreation - Local (E2)
- Pumping Station (SP2)
- Railway (SP2)
- School (SP2)
- Sewage Pumping Station (SP2)
- Trunk Drainage (SP2)

Growth Centre Boundaries

- North West Growth Centre Boundary
- North West Growth Centre Precinct Boundary

Cadastre

- Cadastre 04/11/2022 © Spatial Services



Projection: GDA 1994
MGA Zone 56

Scale: 1:20,000 @ A3

Map Identification Number: SEPP_SRGC_NW_LRA_004_020_20221104

