



# State Environmental Planning Policy (Sydney Region Growth Centres) 2006

## North West Growth Centre Land Reservation Acquisition Map - Sheet LRA\_009

### Land Reservation Acquisition

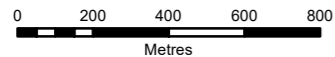
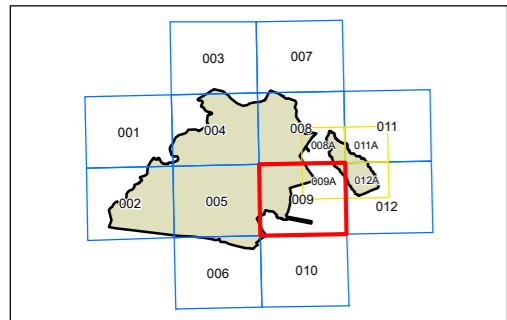
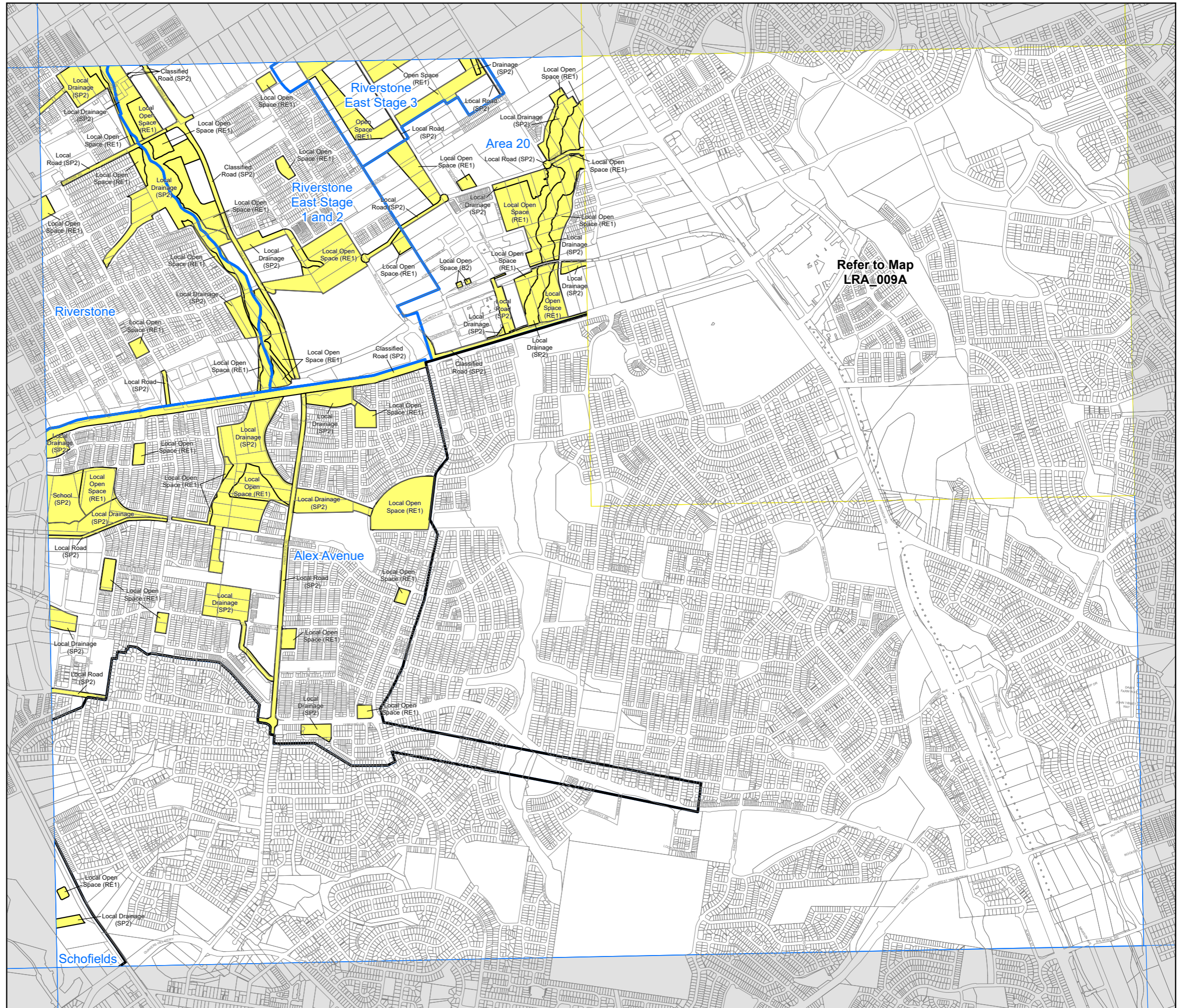
- Bus Only Link (SP2)
- Classified Road (SP2)
- Classified Road Widening (SP2)
- Community Centre (SP2)
- Community Facilities (B2)
- Community Facilities (B4)
- Community Facilities (SP2)
- Electricity Substation (SP2)
- Environmental Conservation (C2)
- Footpath (SP2)
- Infrastructure (SP2)
- Local Drainage (SP2)
- Local Open Space (B2)
- Local Open Space (RE1)
- Local Road (SP2)
- Local Road Widening (SP2)
- Public Recreation - Local (C2)
- Pumping Station (SP2)
- Railway (SP2)
- School (SP2)
- Sewage Pumping Station (SP2)
- Trunk Drainage (SP2)

### Growth Centre Boundaries

- North West Growth Centre Boundary
- North West Growth Centre Precinct Boundary

### Cadastre

- Cadastre 04/02/2026 © Spatial Services



Projection: GDA 1994  
MGA Zone 56

Scale: 1:20,000 @ A3

Map Identification Number: SEPP\_SRGC\_NW\_LRA\_009\_020\_20260204