

# State Environmental Planning Policy (Sydney Region Growth Centres) 2006

## North West Growth Centre Land Zoning Map (Edition 2)- sheet LZN 002

### LEGEND

#### Zone

- B1 Neighbourhood Centre
- B2 Local Centre
- E3 Environmental Management
- E4 Environmental Living
- R1 General Residential
- R2 Low Density Residential
- R3 Medium Density Residential
- RE1 Public Recreation
- SP2 Infrastructure

#### Original SEPP Zones

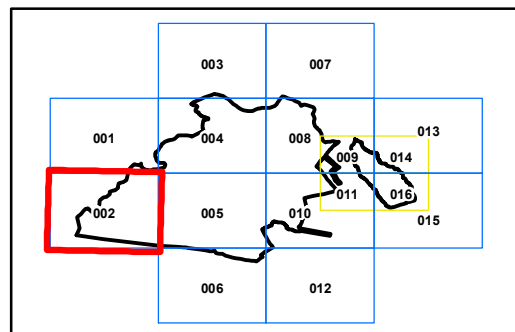
- Environmental Conservation
- Public Recreation - Local
- Public Recreation - Regional

#### Growth Centres Boundaries

- North West Growth Centre Boundary
- North West Growth Centre Precinct Boundary

#### Cadastrate

- Cadastrate 14/11/08 © Dept of Lands



0 0.1 0.2 0.3 0.4 Kilometres



Scale: 1:20,000 @ A3

Projection: GDA 1994  
Zone 56

Map Identification Number  
SEPP\_SRGC\_NW\_LZN\_002\_020\_20081203

