



State Environmental Planning Policy (Sydney Region Growth Centres) 2006

North West Growth Centre Land Zoning Map - Sheet LZN_009

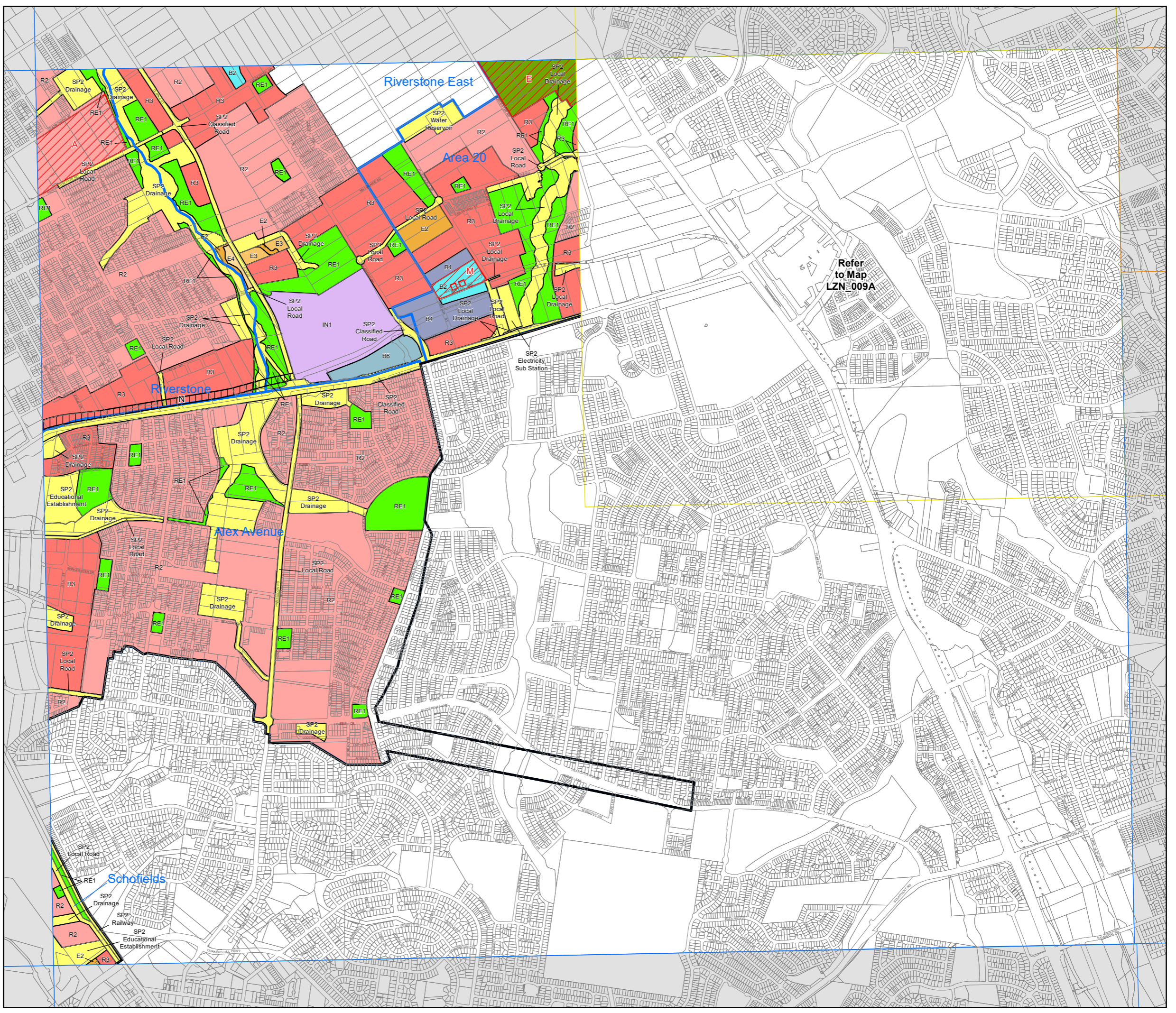
Zone	
B1	Neighbourhood Centre
B2	Local Centre
B3	Commercial Core
B4	Mixed Use
B5	Business Development
B6	Enterprise Corridor
B7	Business Park
E2	Environmental Conservation
E3	Environmental Management
E4	Environmental Living
IN1	General Industrial
IN2	Light Industrial
R1	General Residential
R2	Low Density Residential
R3	Medium Density Residential
R4	High Density Residential
RE1	Public Recreation
RE2	Private Recreation
RU6	Transition
SP2	Infrastructure

Special Provisions	
[Symbol]	Low Density Residential (multi-dwelling housing) - Appendix 4, Clause 2.5
[Symbol]	Riverstone Scheduled Lands - Appendix 4, Clause 6.8
[Symbol]	Green and Golden Bell Frog Habitat - Appendix 4, Clause 6.9
[Symbol]	Additional Uses - Appendix 3, Clause 6.5
[Symbol]	Additional Permitted Uses (Clause 13)
[Symbol]	Take Away Food and Drink Premises permitted with consent - Appendix 5, (Schedule 1, Clause 1)
[Symbol]	Low Density Residential (multi-dwelling housing) - Appendix 7, Clause 2.5
[Symbol]	Transport Corridor Investigation Area - Appendix 7, Clause 6.10
[Symbol]	Transport Corridor - Appendix 12, Clause 6.10
[Symbol]	Food and Drink premises - Appendix 12 (Schedule 1, Clause 1)
[Symbol]	Landfill works - Appendix 12 (Schedule 1, Clause 2)
[Symbol]	Gas processing system and associated plant and equipment - Appendix 12 (Schedule 1, Clause 3)
[Symbol]	Residential Flat Buildings - Appendix 4 (Schedule 1, Clause 2)
[Symbol]	Transport Investigation Area Corridor, Appendix 4, Clause 6.10
[Symbol]	Additional Permitted Use, Appendix 13, Schedule 1

Original SEPP Zones	
[Symbol]	Environmental Conservation
[Symbol]	Public Recreation - Local
[Symbol]	Public Recreation - Regional

Growth Centre Boundaries	
[Symbol]	North West Growth Centre Boundary
[Symbol]	North West Growth Centre Precinct Boundary

Cadastral	
[Symbol]	Cadastral 09/07/2020 © Spatial Services



Refer to Map LZN_009A

