

State Environmental Planning Policy (Sydney Region Growth Centres) 2006

South West Growth Centre
Land Zoning Map -
Sheet LZN_004

Zone

- B1** Neighbourhood Centre
- B2** Local Centre
- B3** Commercial Core
- B4** Mixed Use
- B5** Business Development
- B7** Business Park
- E2** Environmental Conservation
- E3** Environmental Management
- E4** Environmental Living
- IN1** General Industrial
- IN2** Light Industrial
- R1** General Residential
- R2** Low Density Residential
- R3** Medium Density Residential
- RE1** Public Recreation
- RE2** Private Recreation
- RU6** Transition
- SP2** Infrastructure

Original SEPP Zones

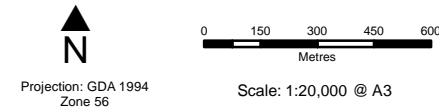
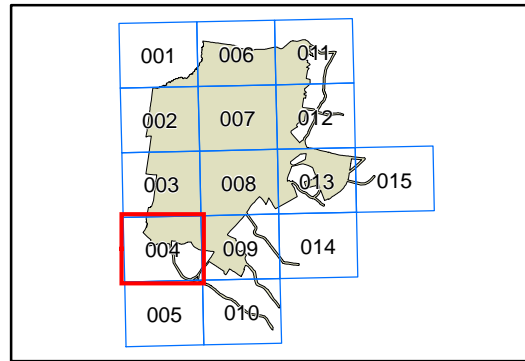
- Public Recreation - Regional**

Growth Centre Boundaries

- South West Growth Centre Boundary**
- South West Growth Centre Precinct Boundary**

Cadastre

- Cadastre © 07/02/2019 Spatial Services**



Projection: GDA 1994
Zone 56
Scale: 1:20,000 @ A3

Map Identification Number: SEPP_SRGC_SW_LZN_004_020_20190207

