





Planning and Environment


# State Environmental Planning Policy (Precincts—Western Parkland City) 2021


## Wilton Growth Area Urban Release Area Map Sheet URA\_003

 Land subject to Satisfactory Arrangements for Provision of State Infrastructure in accordance with Appendix 7 (South East Wilton) or Appendix 8 (North Wilton), Clause 6.2


 Land subject to Designated State Public Infrastructure requirements in accordance with Appendix 9 (Wilton Town Centre), Clause 6.2

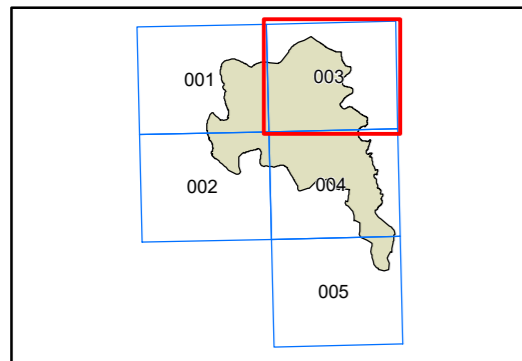
### Growth Area Boundaries

 Wilton Growth Area Boundary

 Wilton Growth Area Precinct Boundary

### Cadastre

 Cadastre 07/06/2022 © Spatial Services



0 0.1 0.2 0.3 0.4 0.5 km

Projection: GDA 1994 MGA Zone 56 Scale: 1:20,000 @ A3

Map Identification Number: SEPP\_WPC\_WT\_URA\_003\_20220607

