






# State Environmental Planning Policy (Precincts—Western Parkland City) 2021

## Urban Release Area Map Sheet URA\_004

 Land subject to Satisfactory Arrangements for Provision of State Infrastructure in accordance with Appendix 7 (South East Wilton) or Appendix 8 (North Wilton), Clause 6.2


 Land subject to Designated State Public Infrastructure requirements in accordance with Appendix 9 (Wilton Town Centre), Clause 6.2

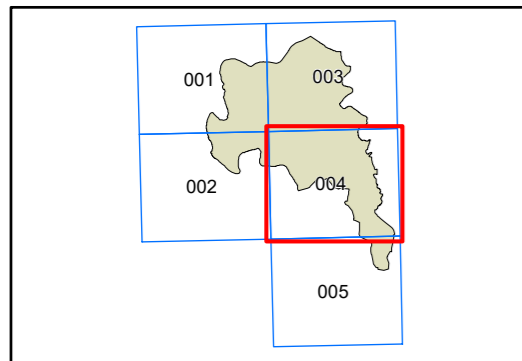
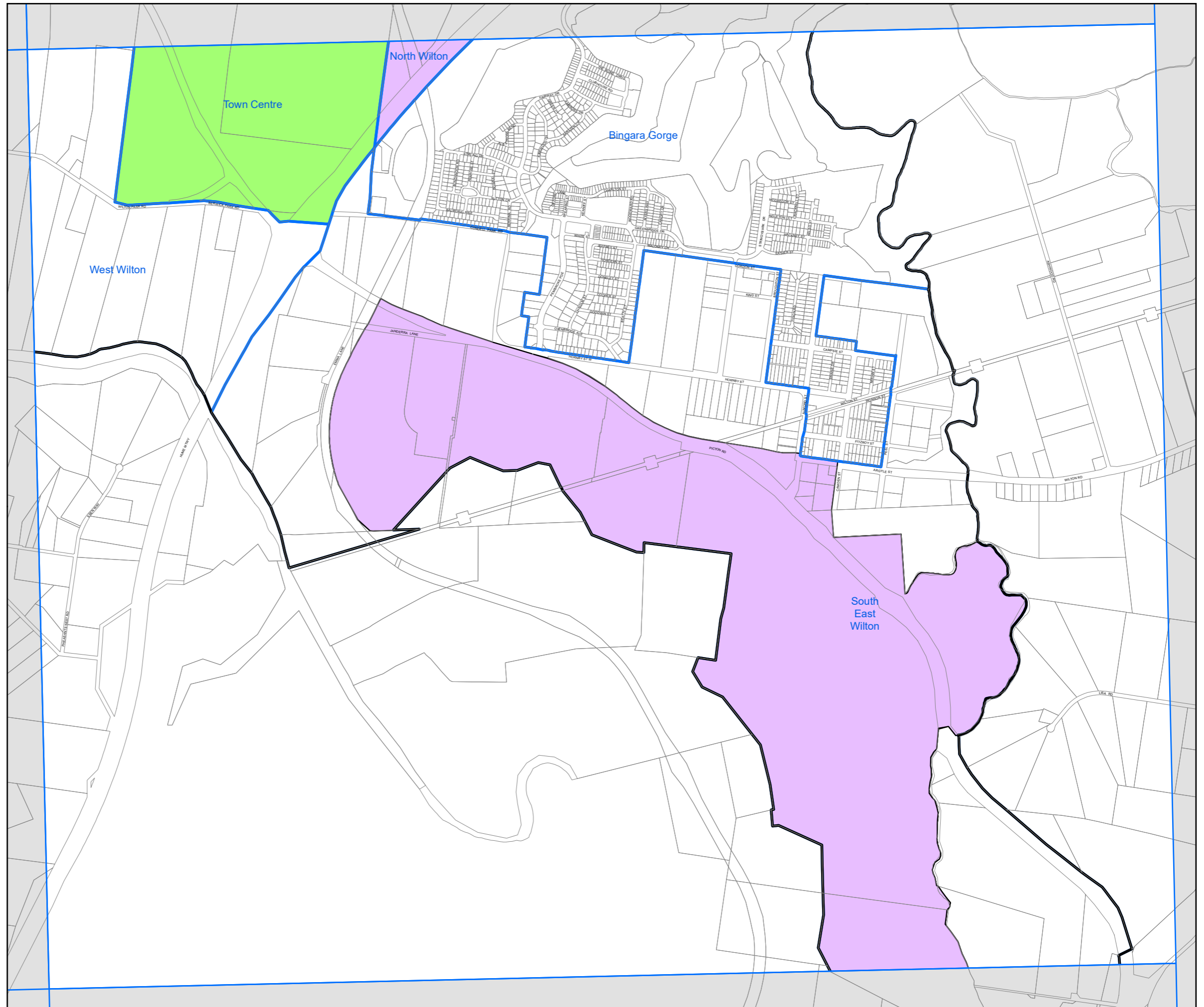
### Growth Area Boundaries

 Wilton Growth Area Boundary

 Wilton Growth Area Precinct Boundary

### Cadastre

 Cadastre 08/03/2022 © Spatial Services



0 0.1 0.2 0.3 0.4 0.5 km

Projection: GDA 1994 MGA Zone 56 Scale: 1:20,000 @ A3