

# maps

Georges River Catchment

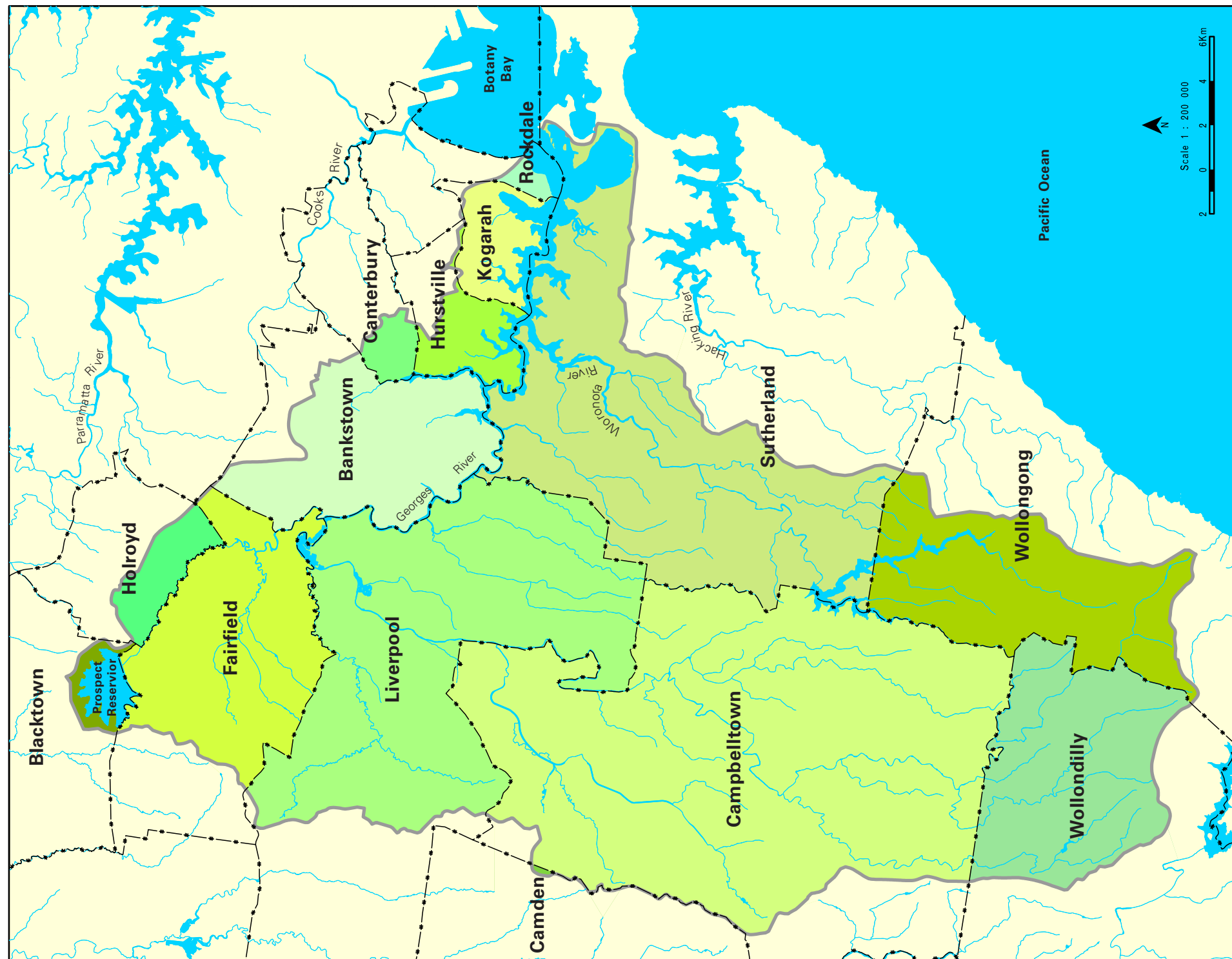
**Department of Urban Affairs and Planning**



# boundary map

**Includes the parts of the following LGAs that are within the Georges River Catchment.**

Bankstown  
Blacktown  
Camden  
Campbelltown  
Canterbury  
Fairfield  
Holroyd  
Hurstville  
Kogarah  
Liverpool  
Rockdale  
Sutherland  
Wollondilly  
Wollongong



— Catchment boundary  
— # — LGA boundary  
— major roads  
++++ railway line

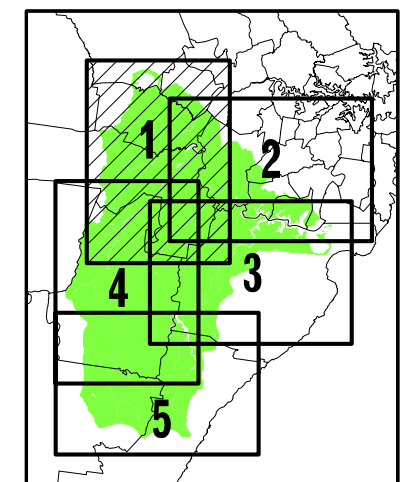
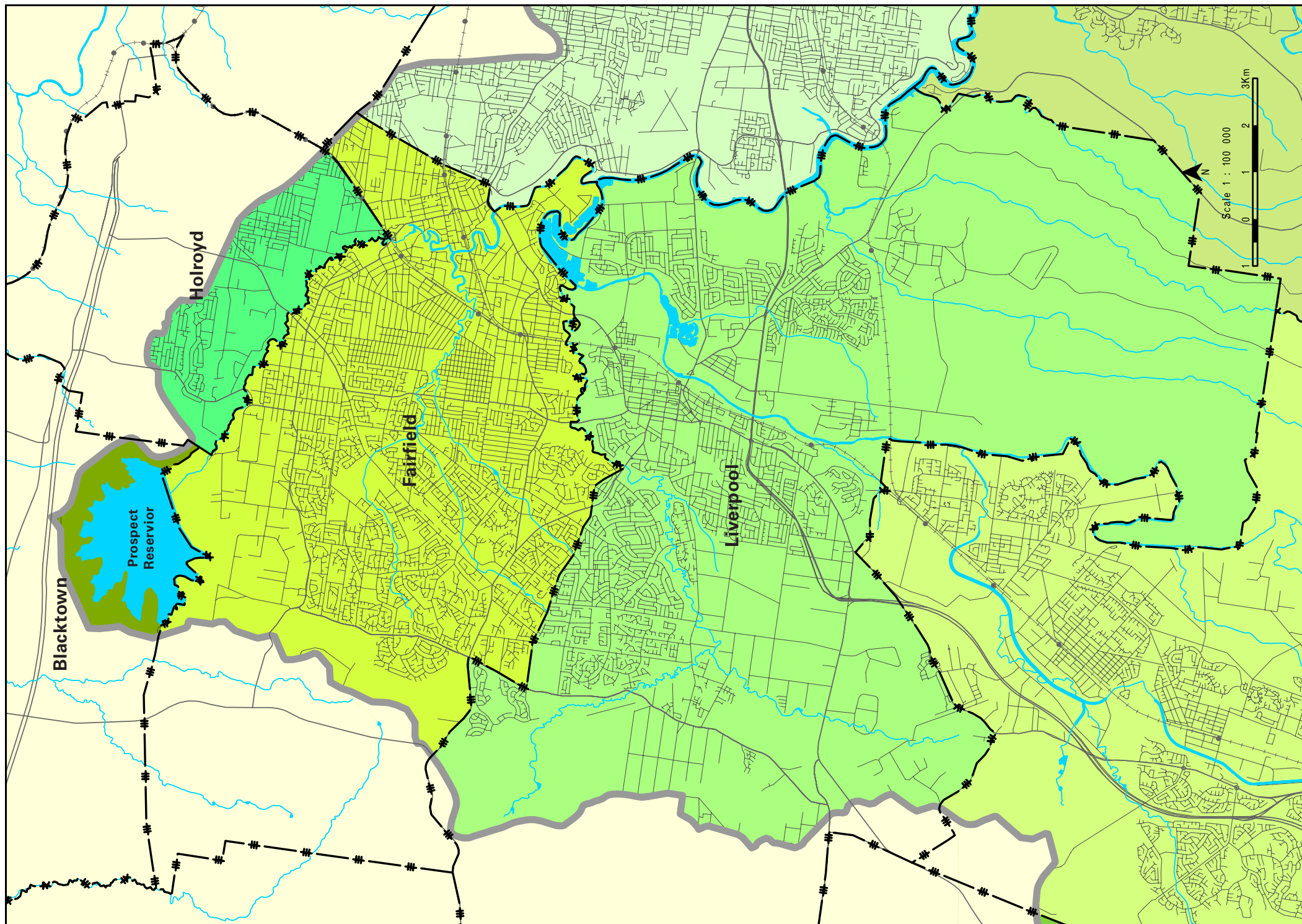
# map

## 1 of 5

**Includes the parts of the following LGAs that are within the Georges River Catchment.**

Blacktown  
Fairfield  
Holroyd  
Liverpool

— Catchment boundary  
-#- LGA boundary  
— major roads  
++++ railway line





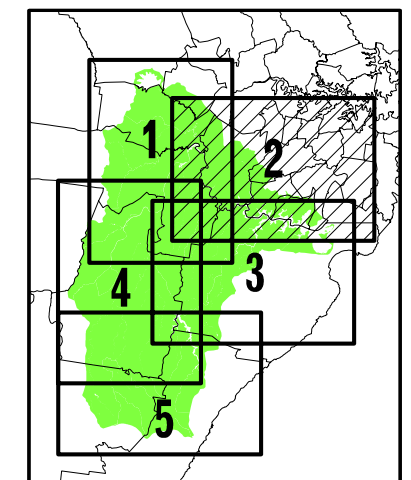
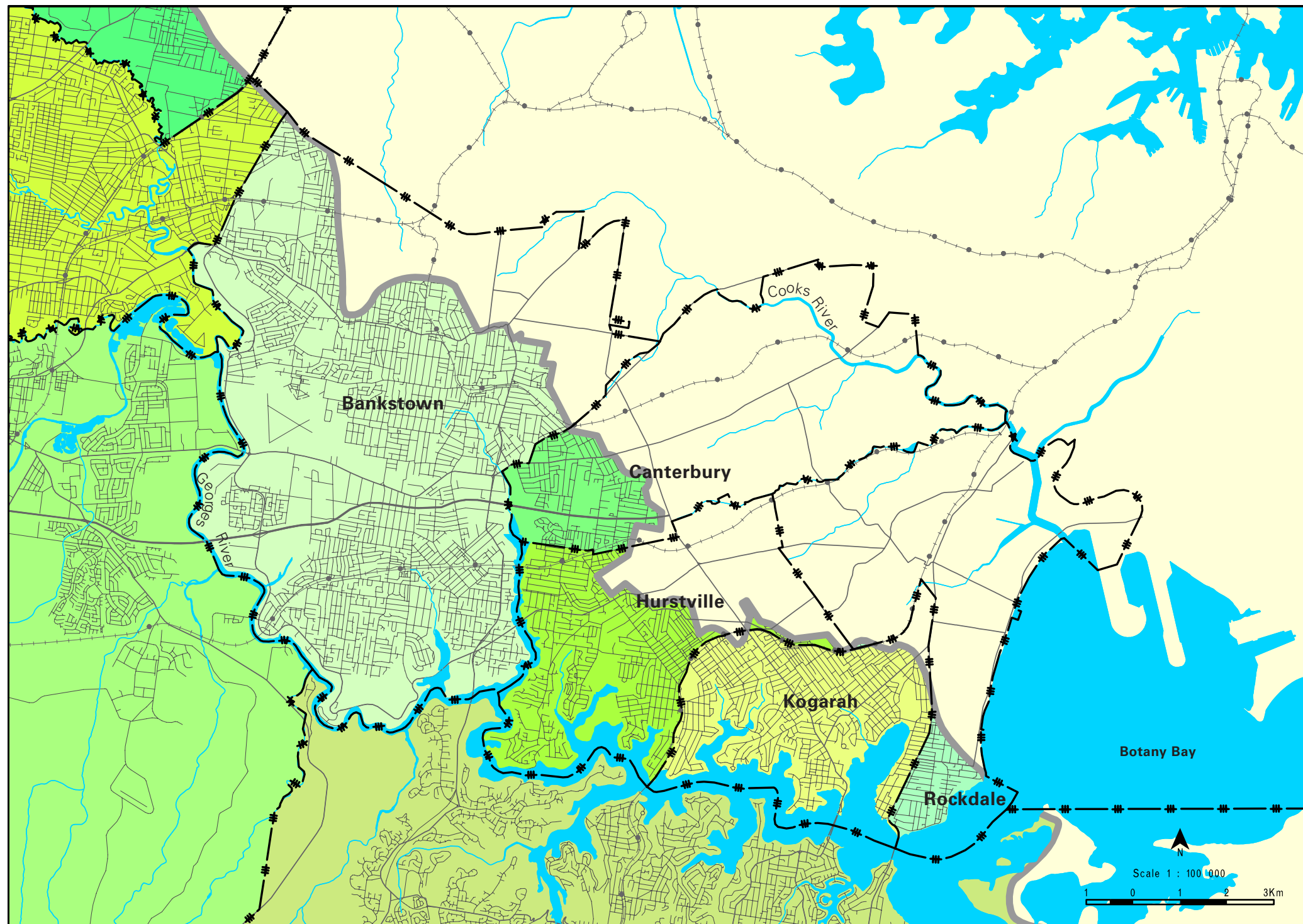
# map

## 2 of 5

**Includes the parts of the following LGAs that are within the Georges River Catchment.**

Bankstown  
Canterbury  
Hurstville  
Kogarah  
Rockdale

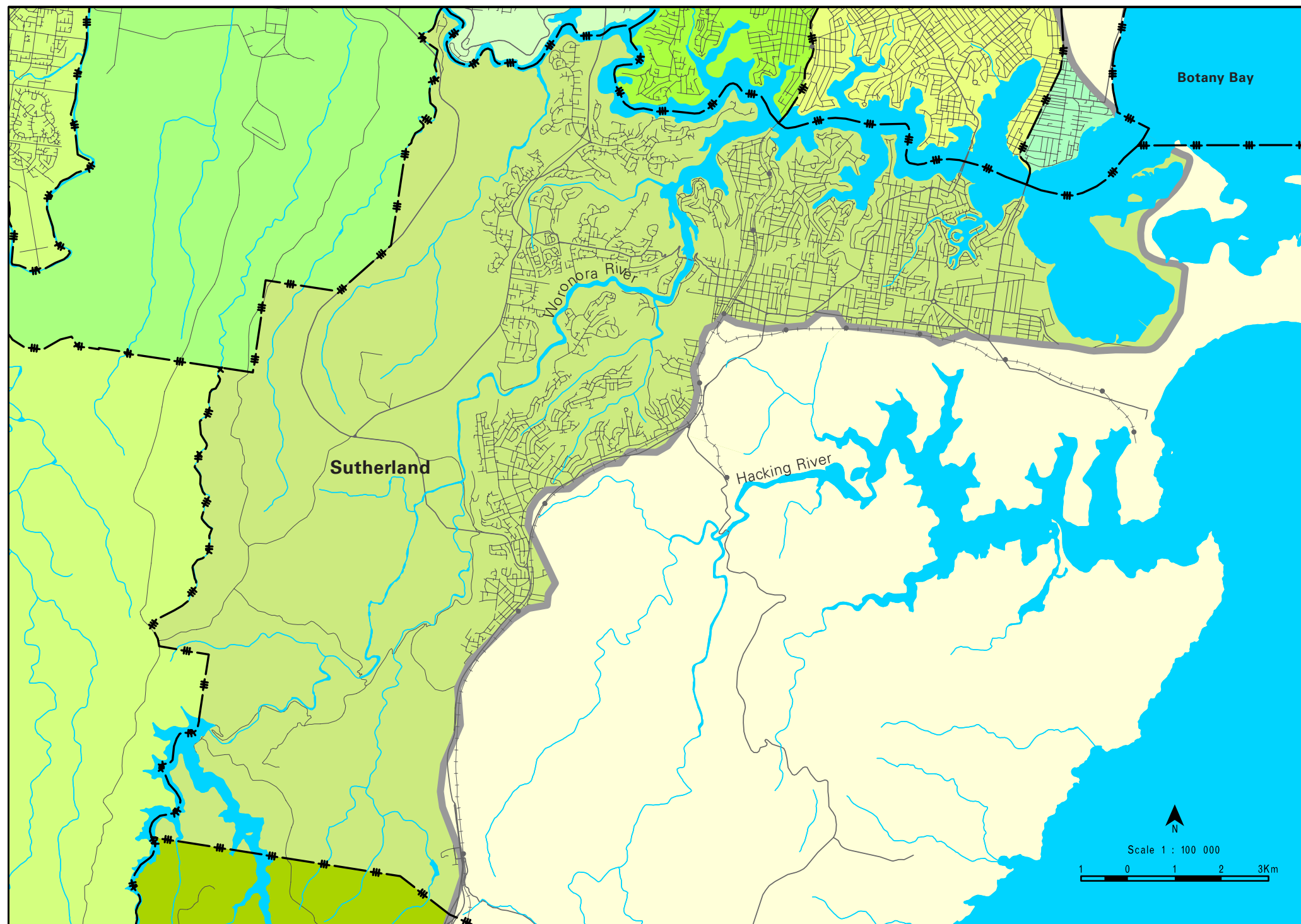
— Catchment boundary  
-#- LGA boundary  
— major roads  
++++ railway line



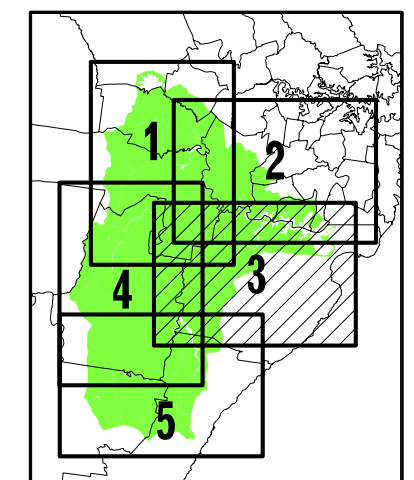
# map 3 of 5

**Includes the parts of  
the following LGA that  
is within the Georges  
River Catchment.**

Sutherland



- Catchment boundary
- \* - LGA boundary
- major roads
- + + + + railway line

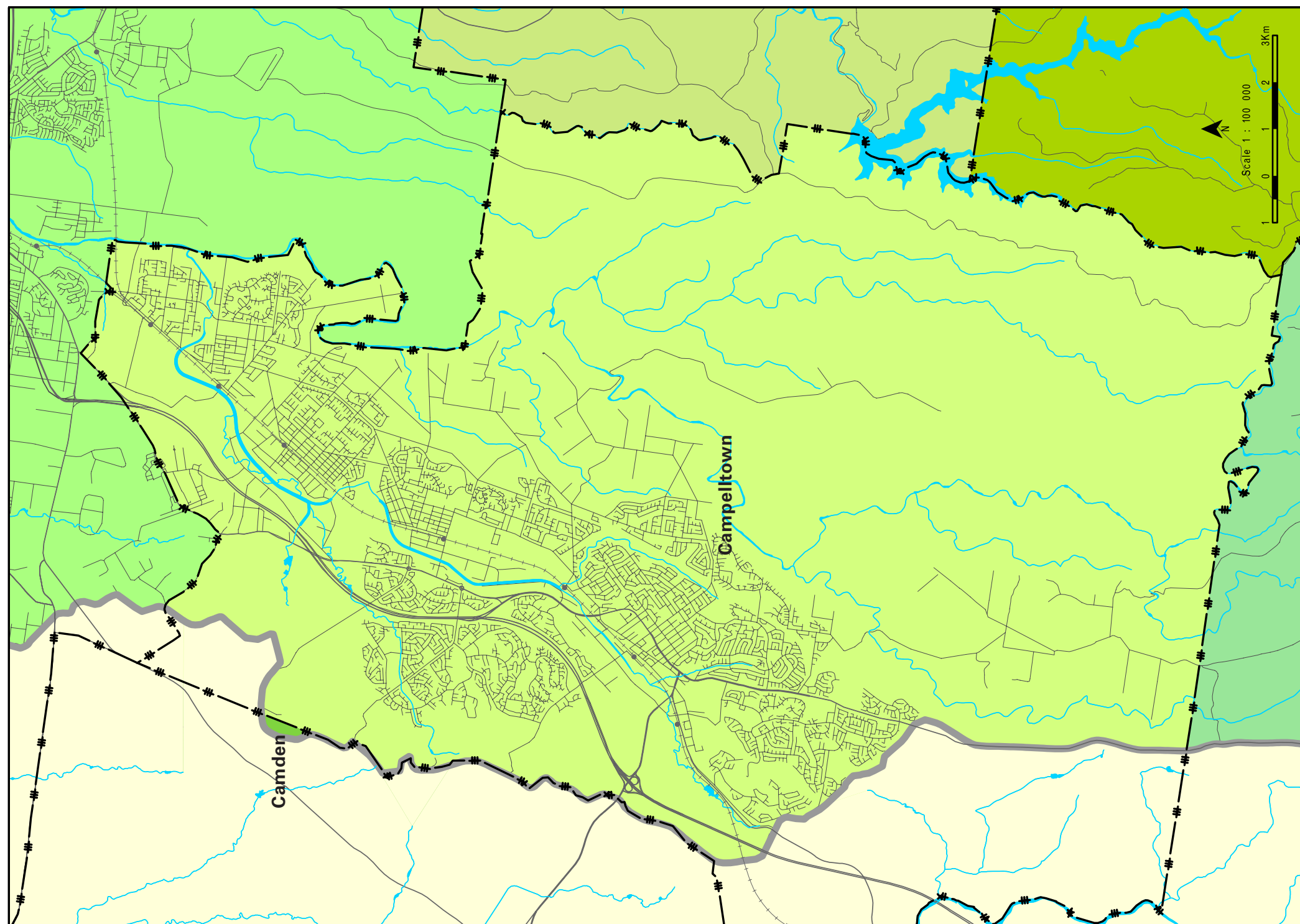




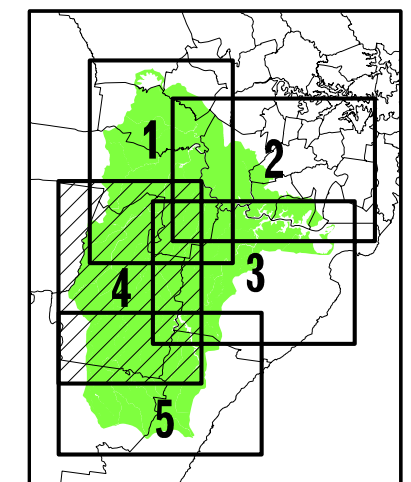
# map 4 of 5

**Includes the parts of  
the following LGAs that  
are within the Georges  
River Catchment.**

Camden  
Campbelltown



- Catchment boundary
- - - LGA boundary
- major roads
- + + + + railway line



# map 5 of 5

**Includes the parts of  
the following LGAs that  
are within the Georges  
River Catchment.**

Wollondilly  
Wollongong



- Catchment boundary
- #- LGA boundary
- major roads
- + + + + railway line

